

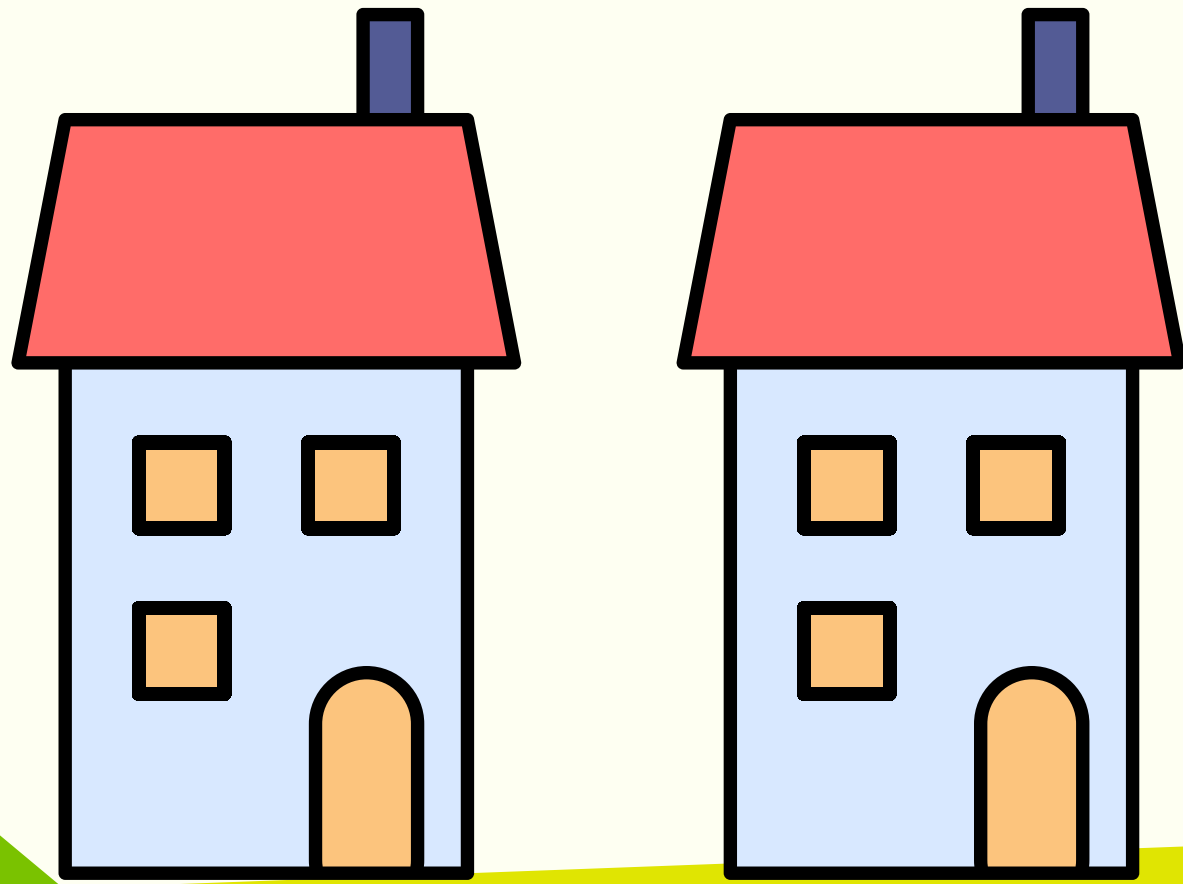
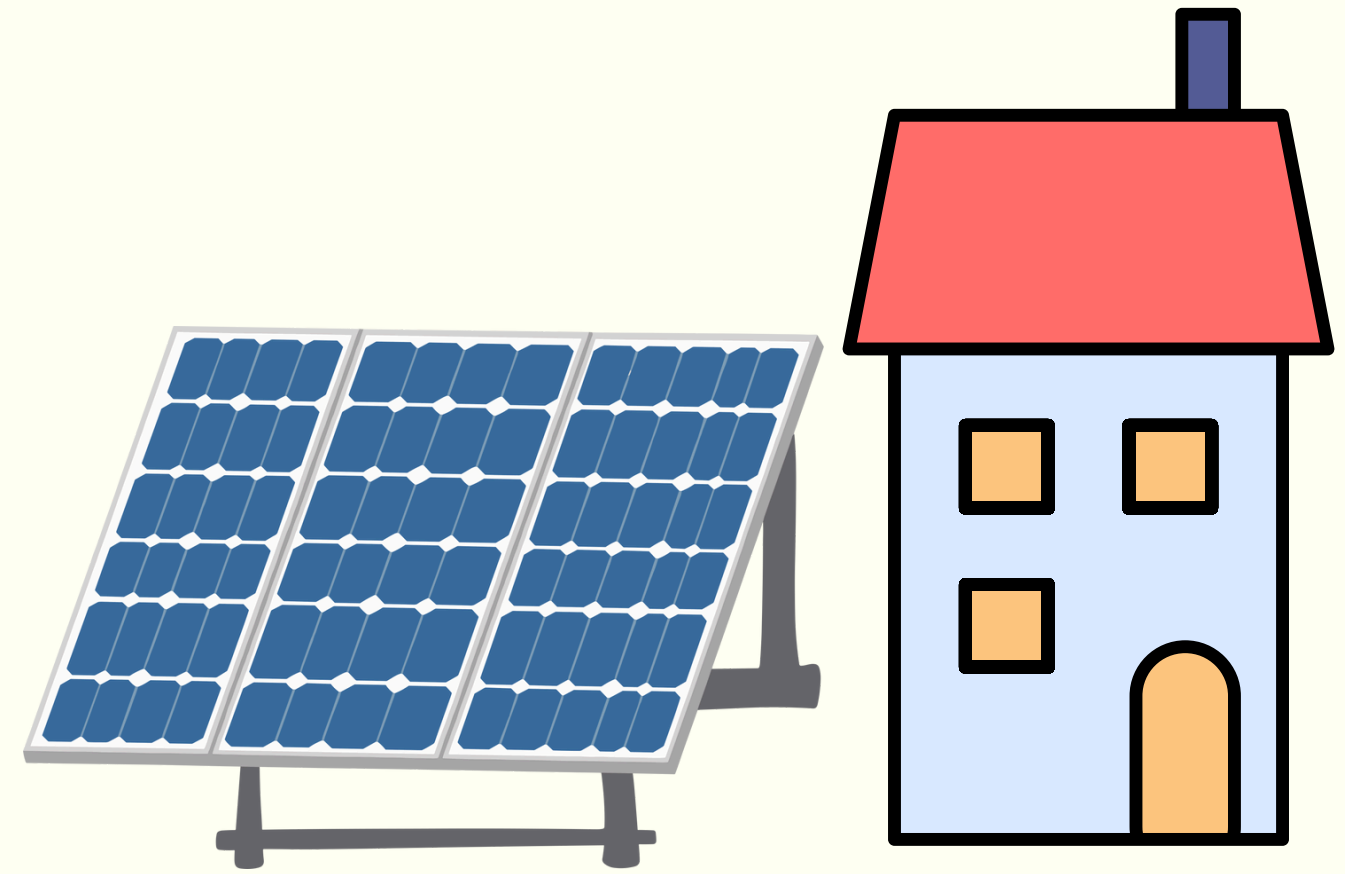


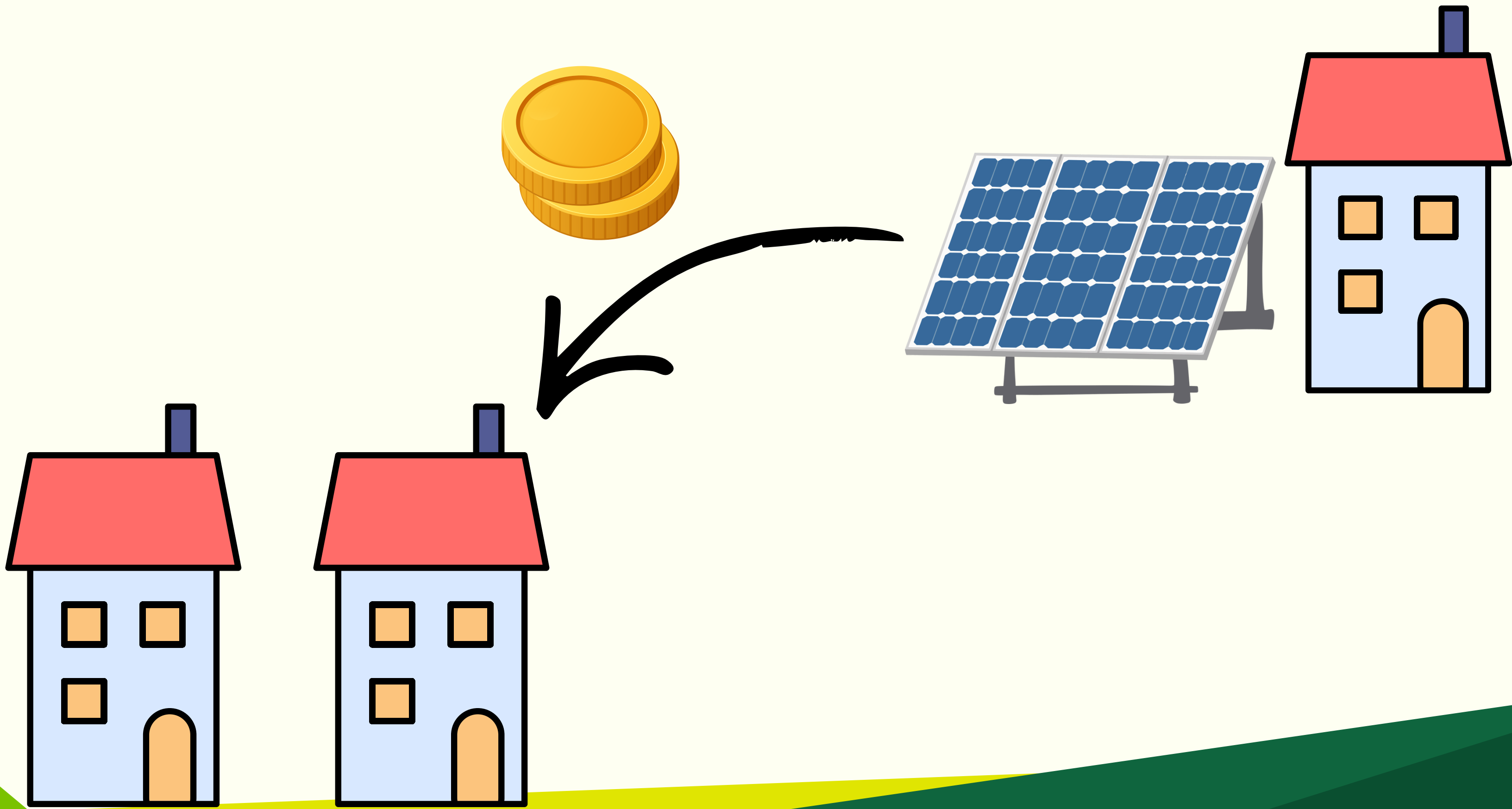
Herzlich Willkommen

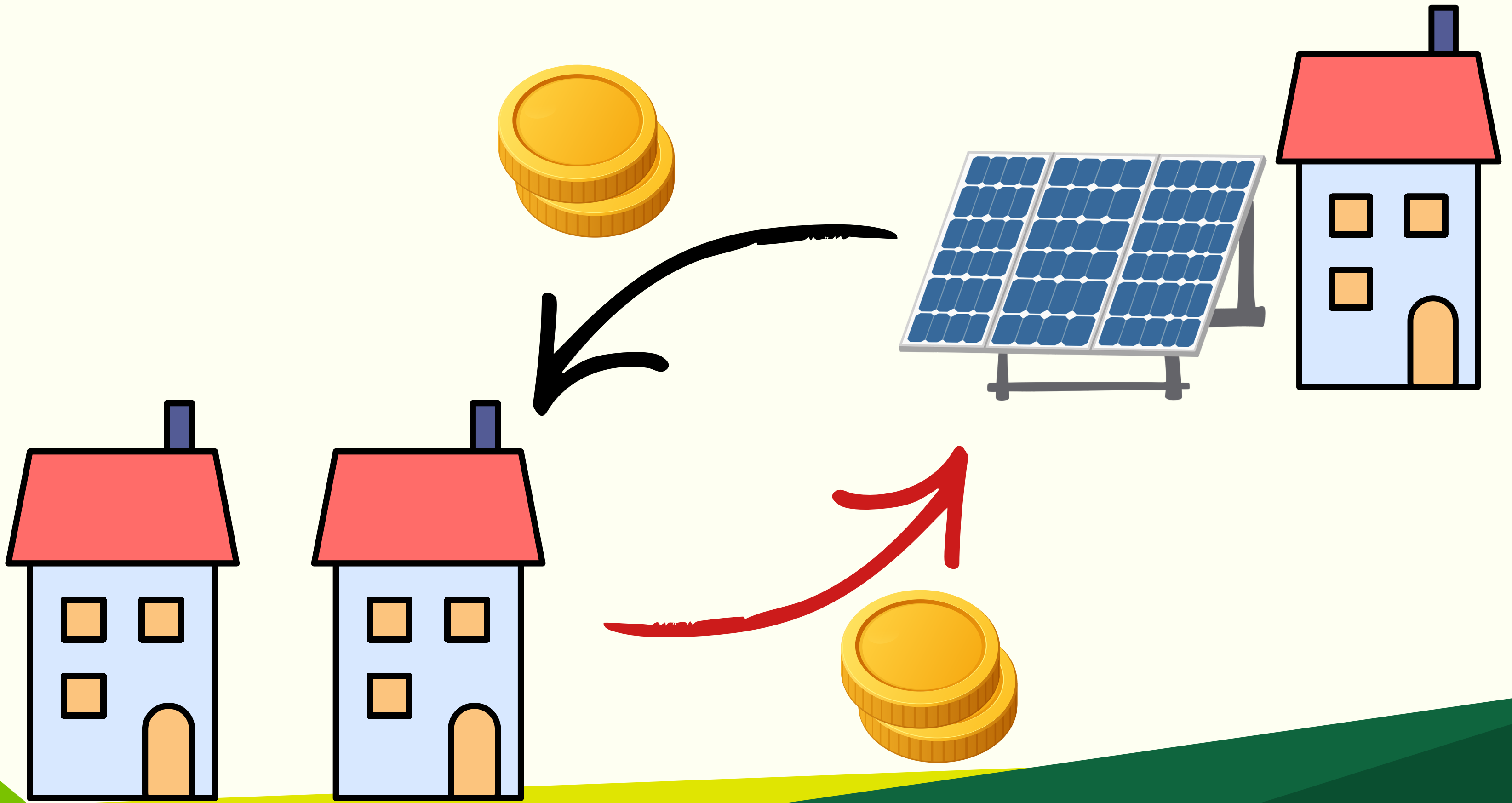
EEG ST.FLORIAN

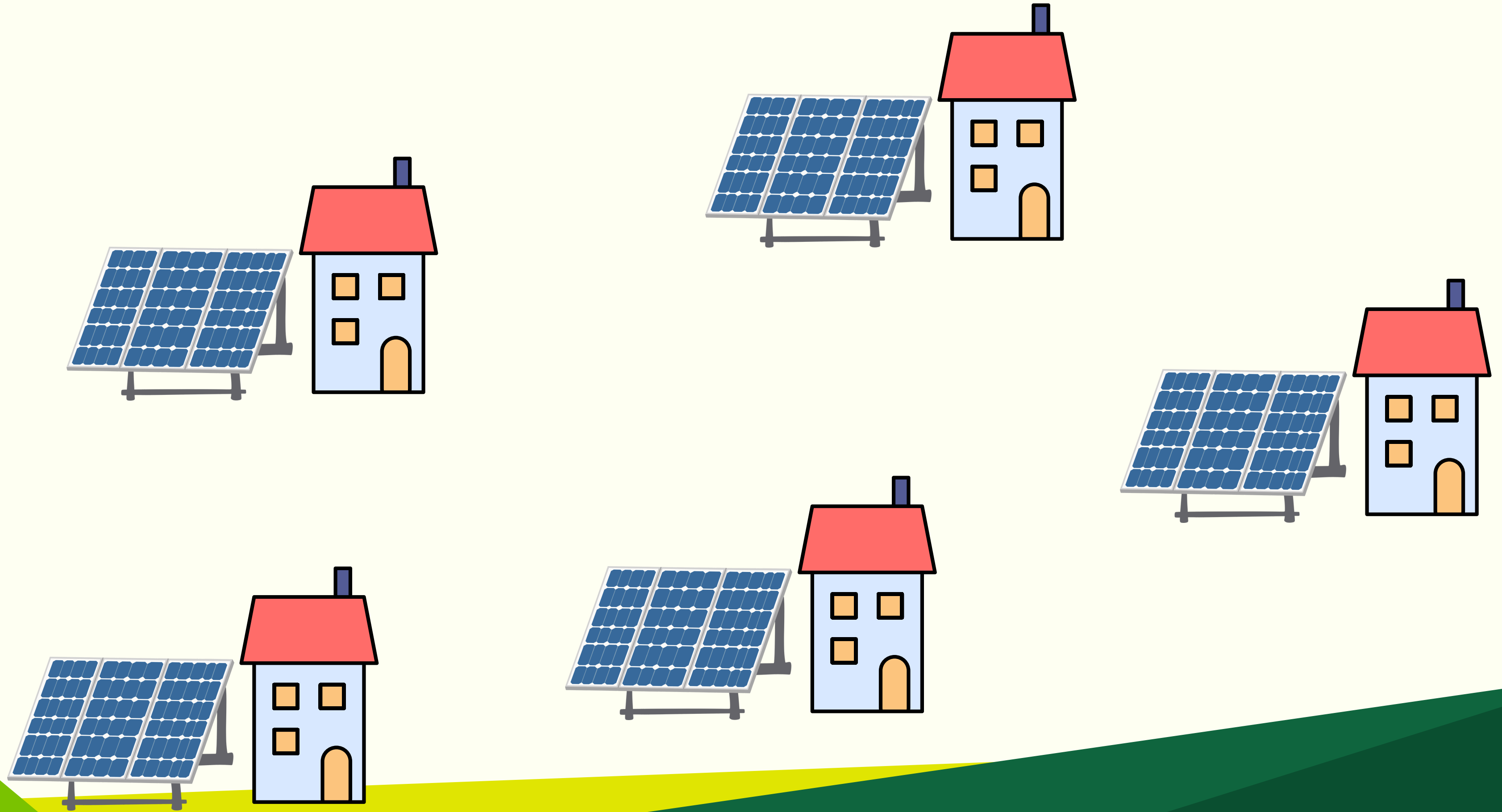
SPEICHER



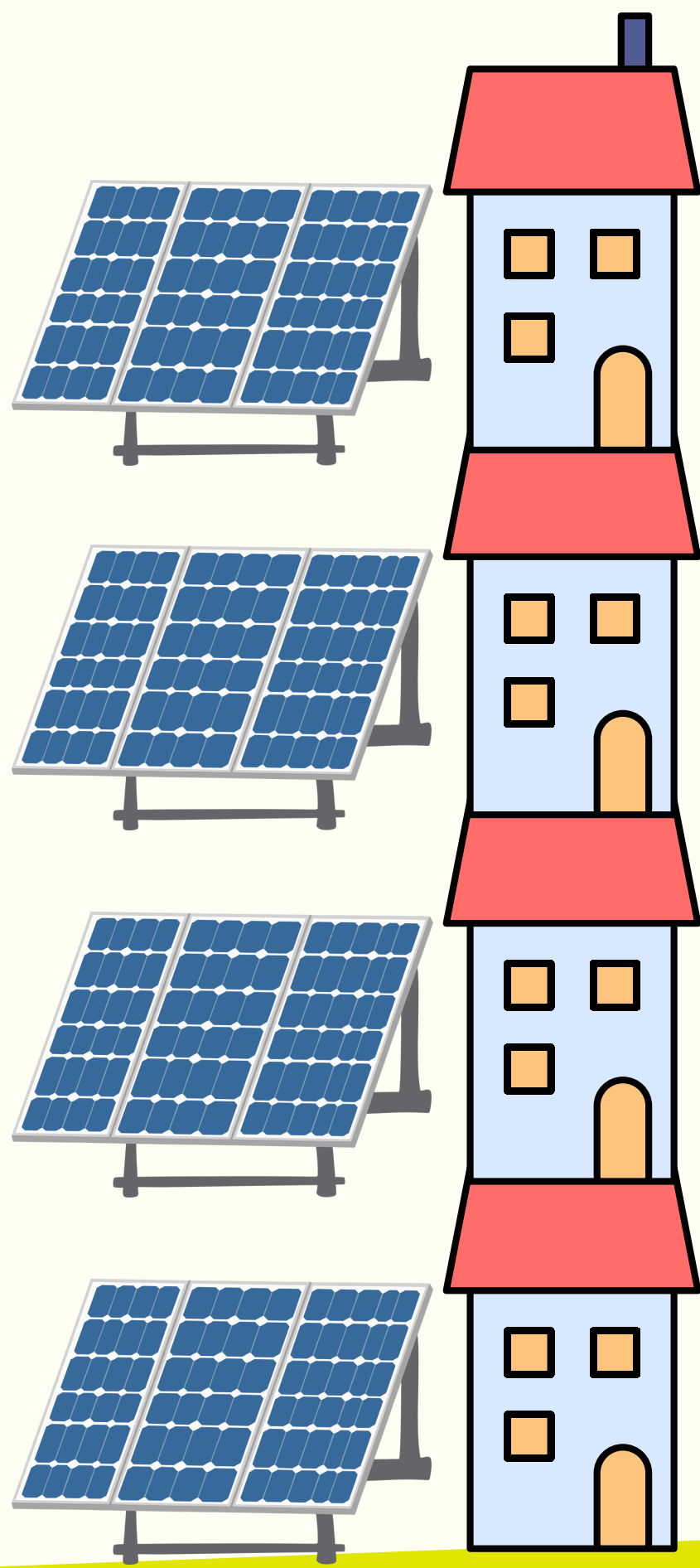


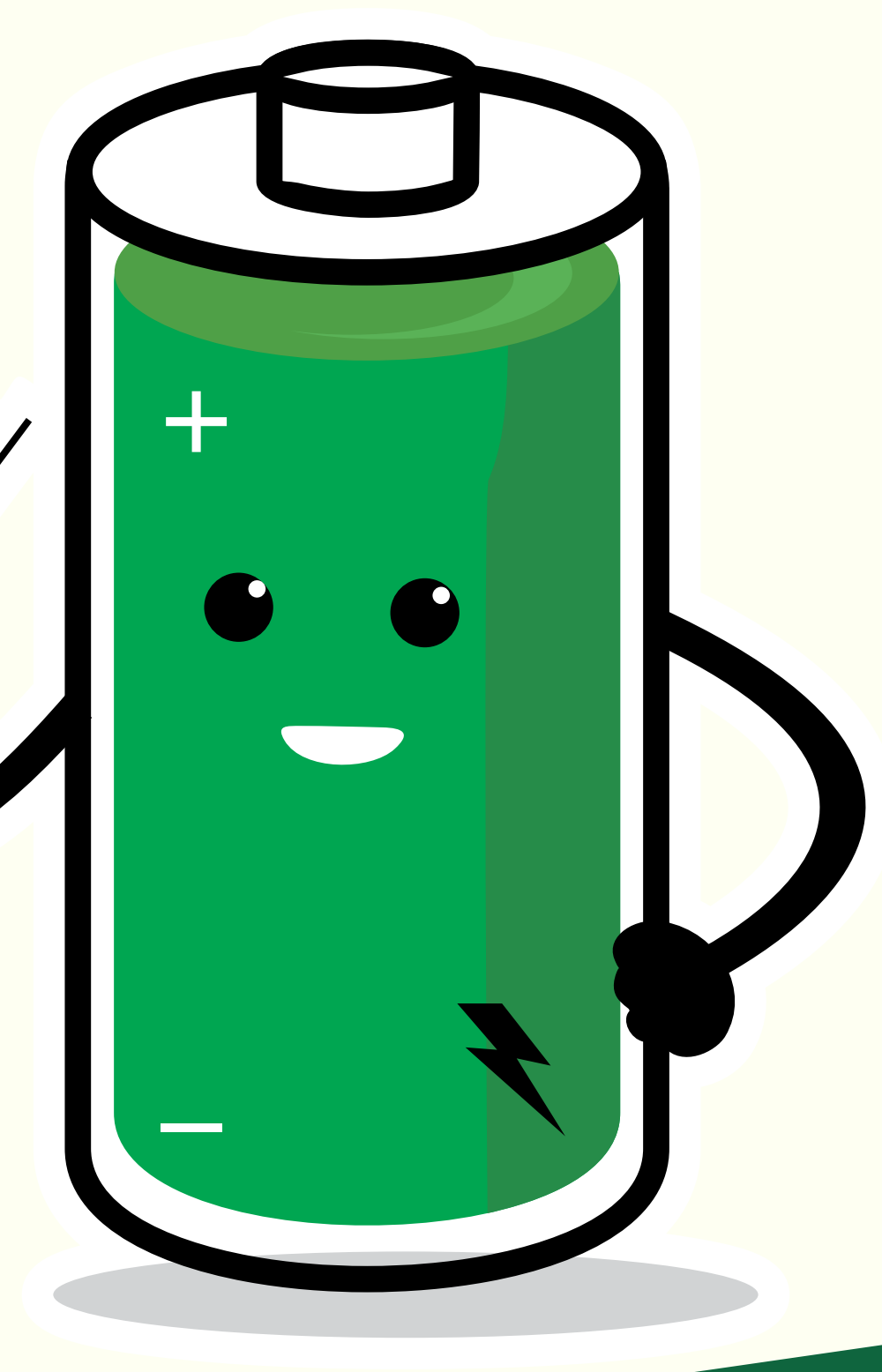
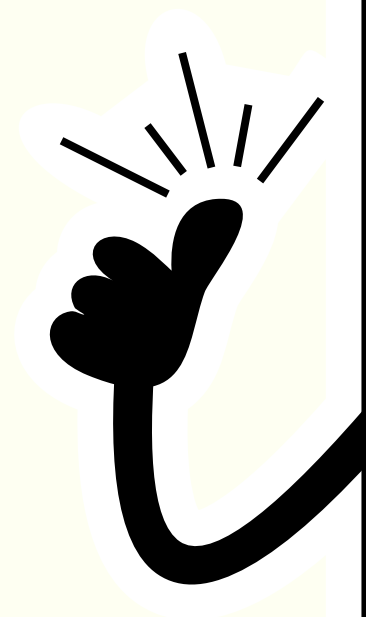
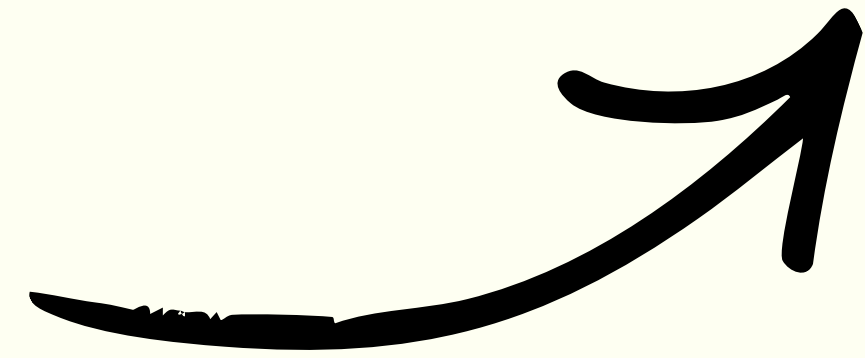
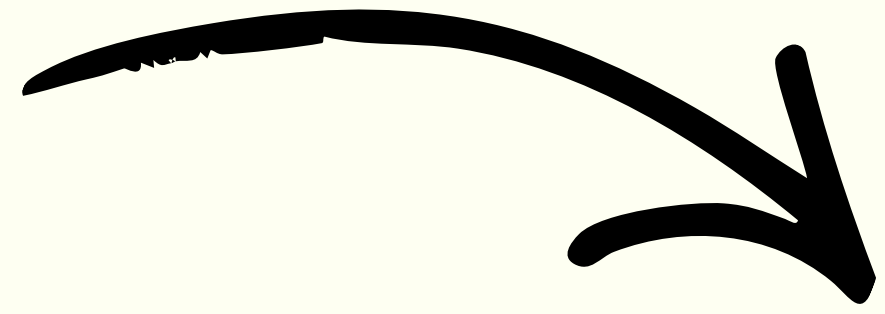
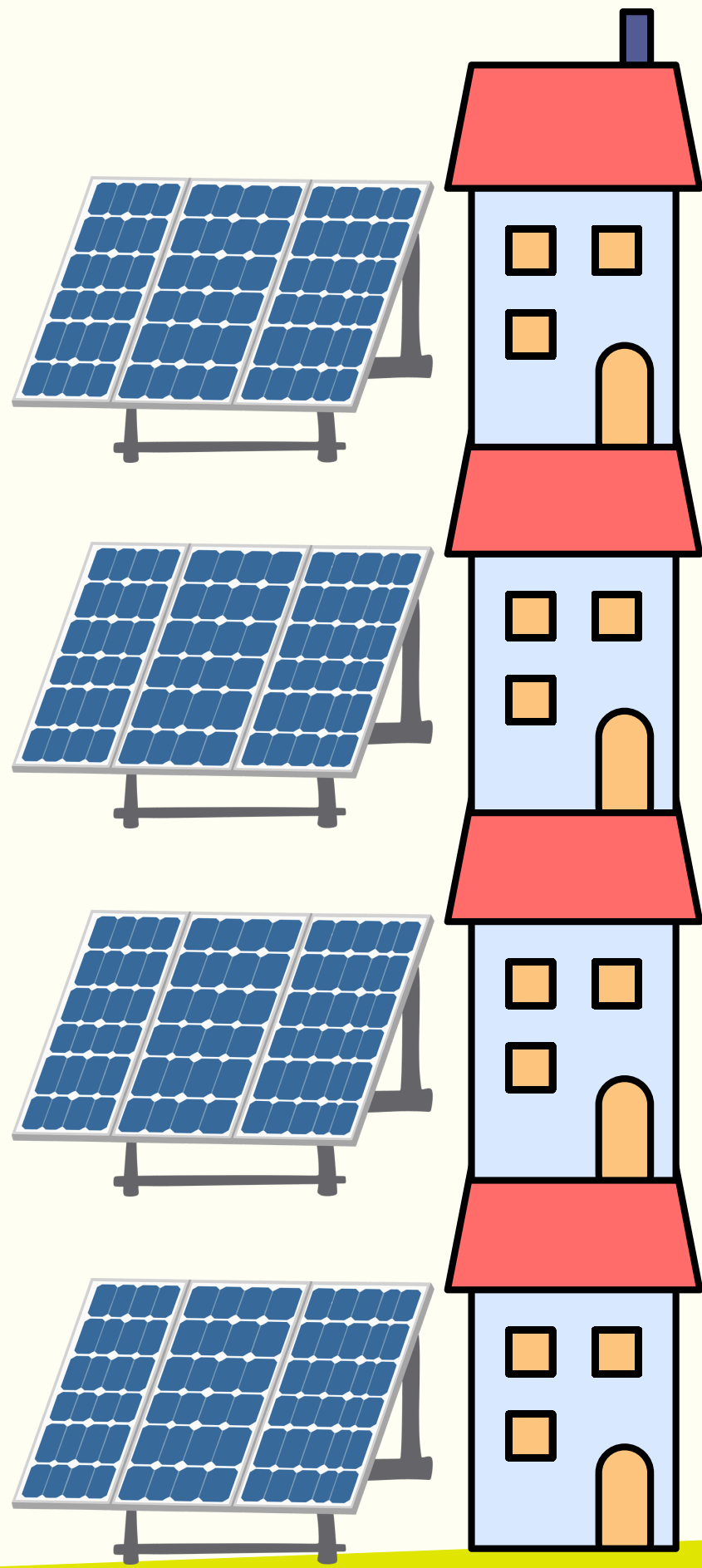














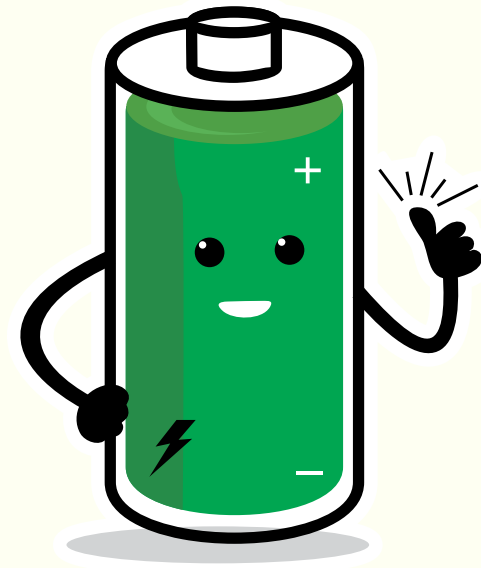
Herzlich Willkommen

EEG ST.FLORIAN

SPEICHER

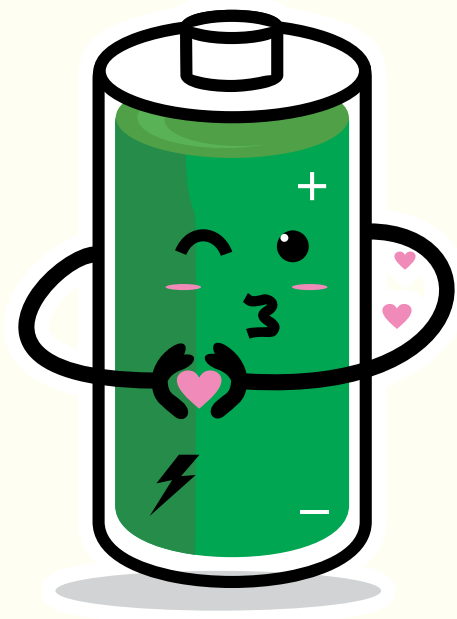


ÜBERSICHT



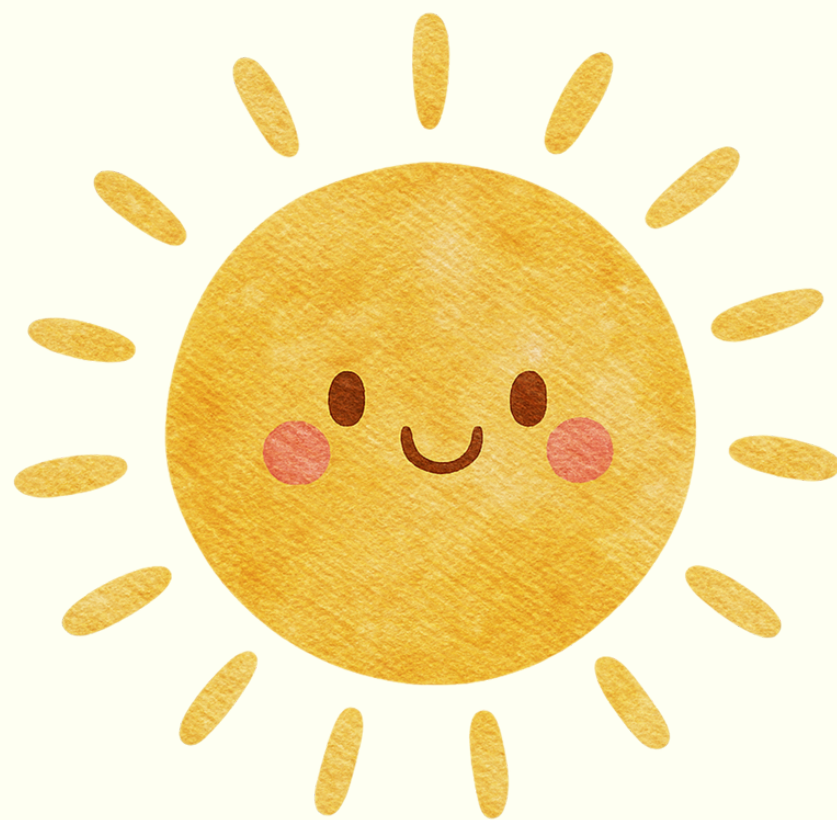
Mittelgrosse Speicher

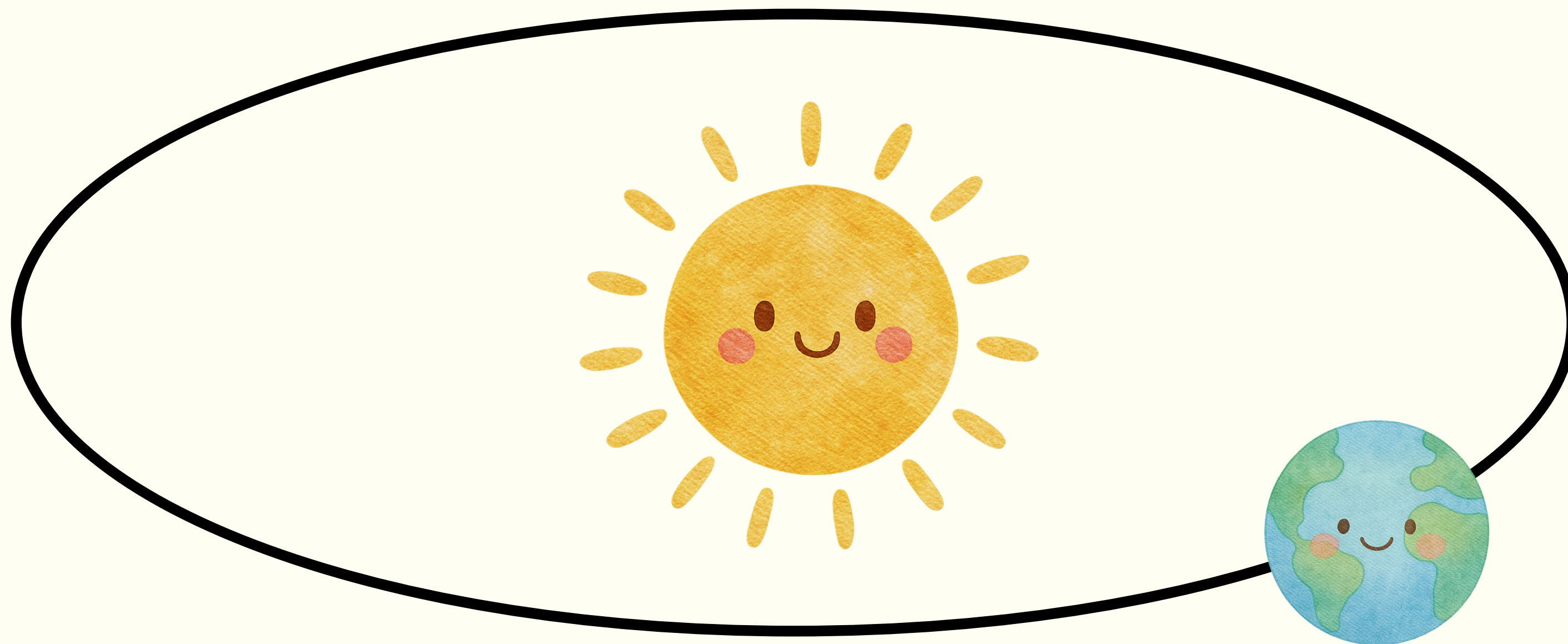
Gemeindezeitung St. Florian

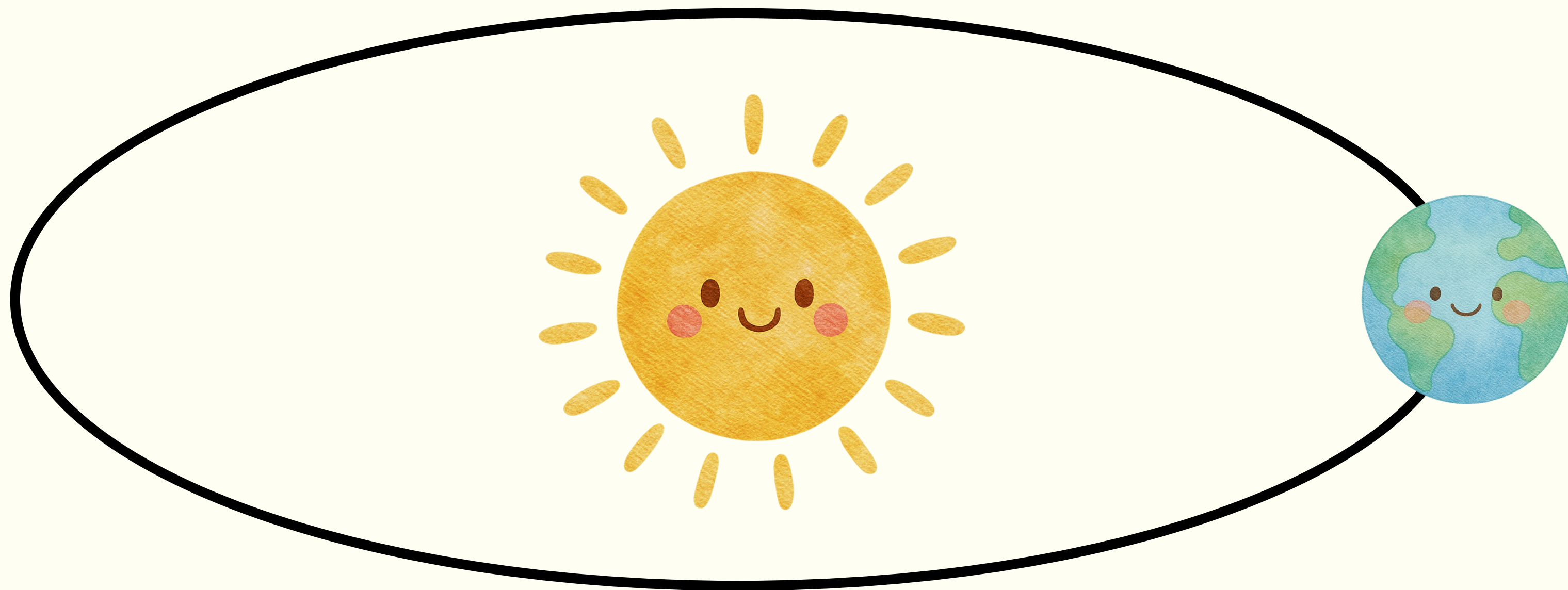


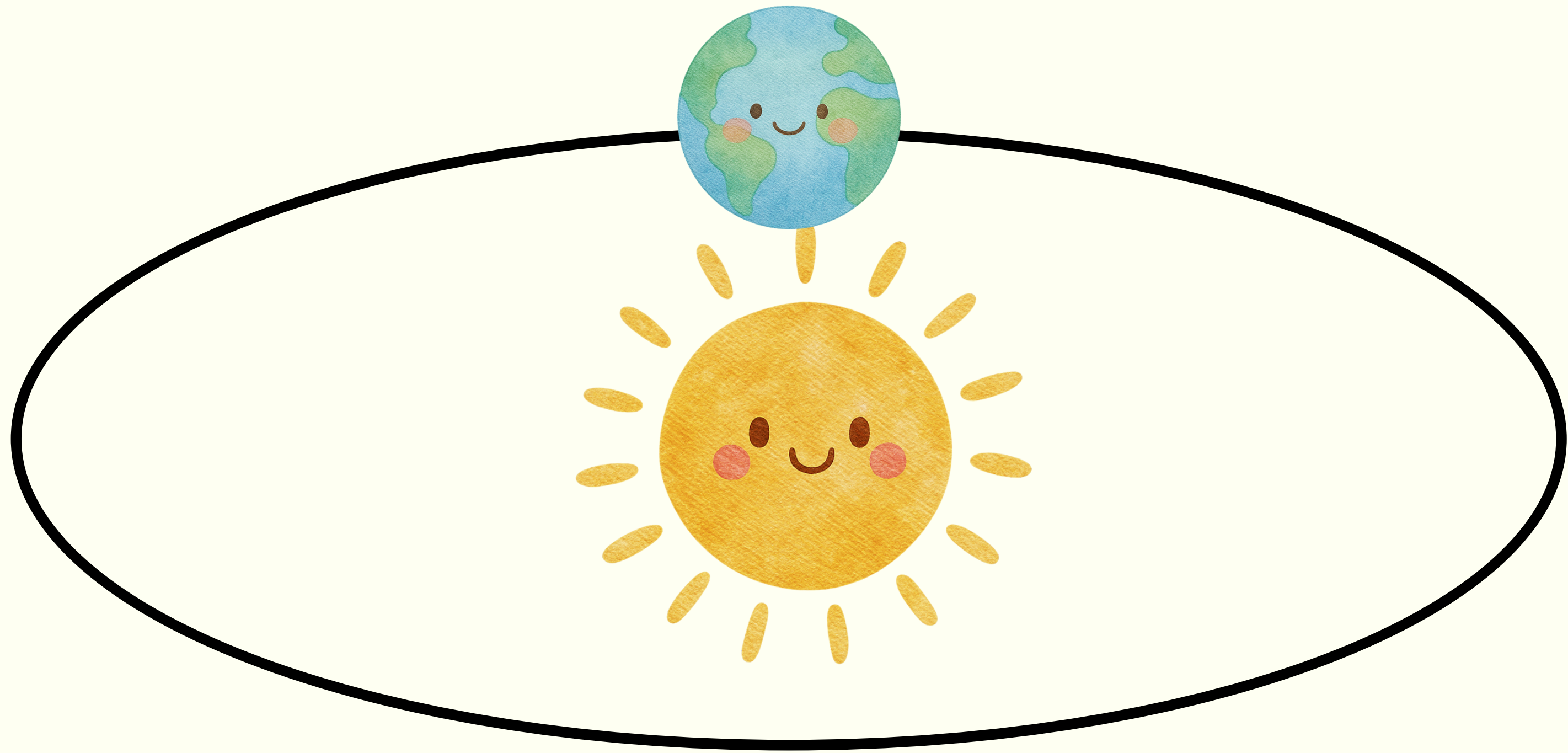
Grossspeicher

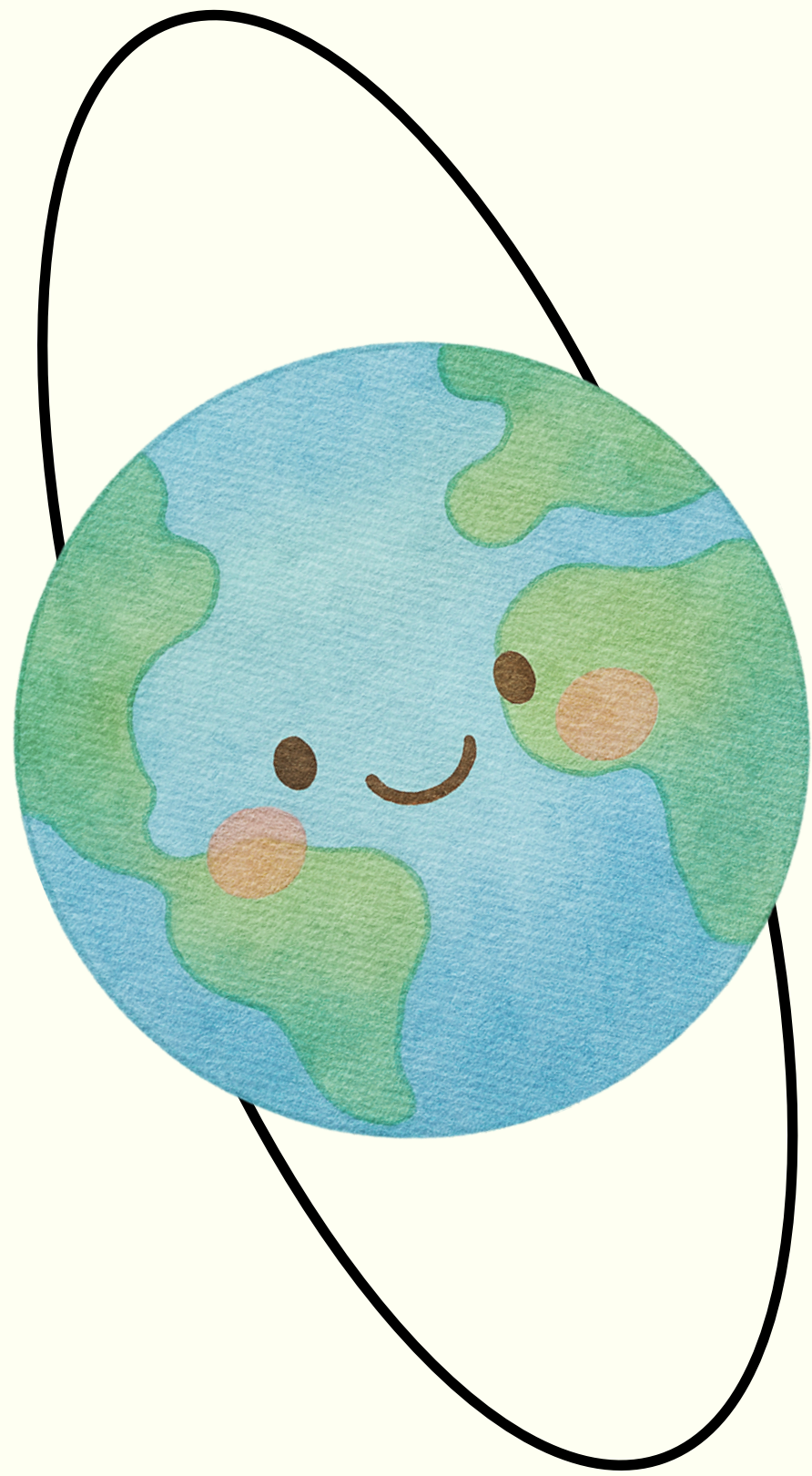
Blickpunkt

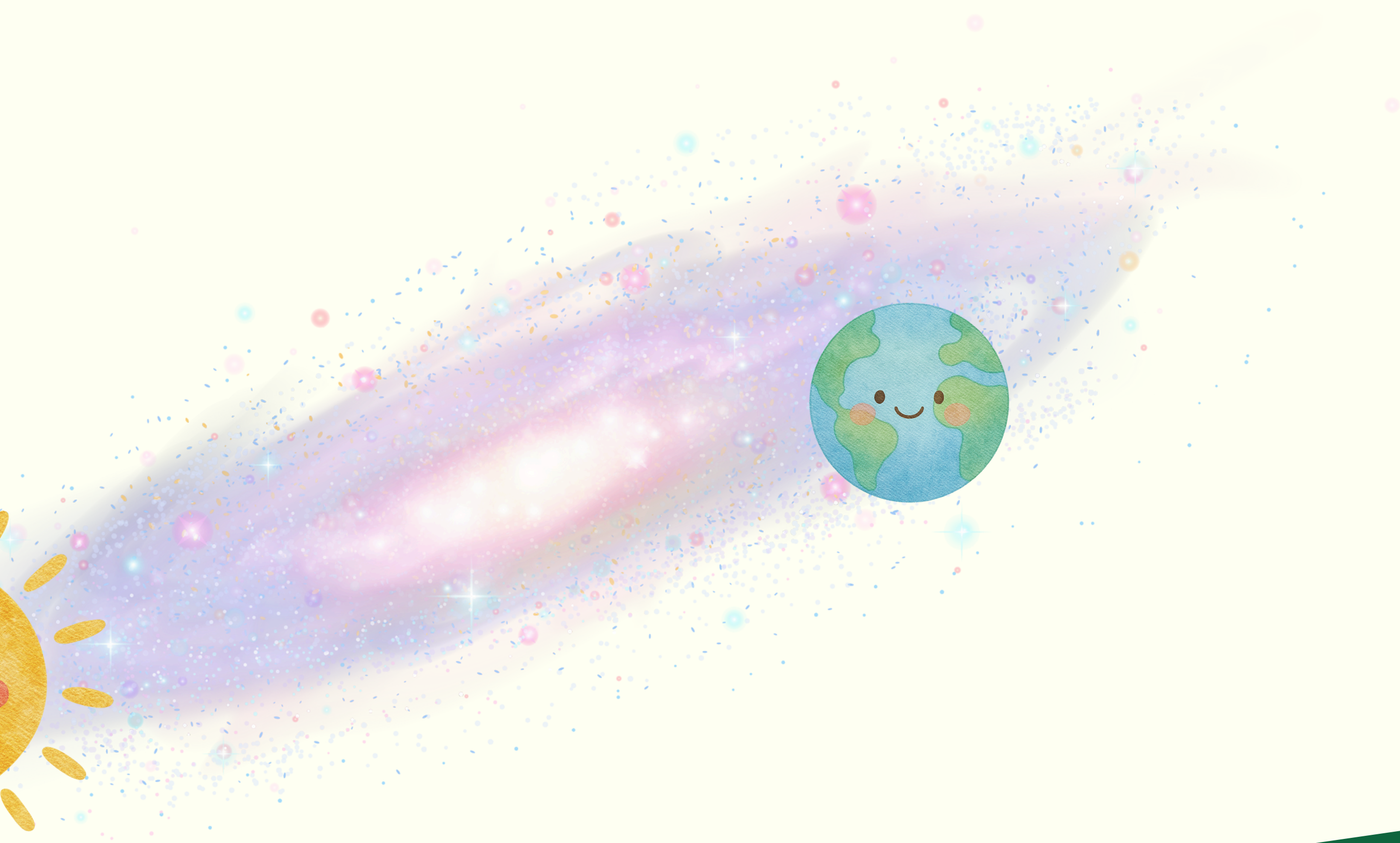
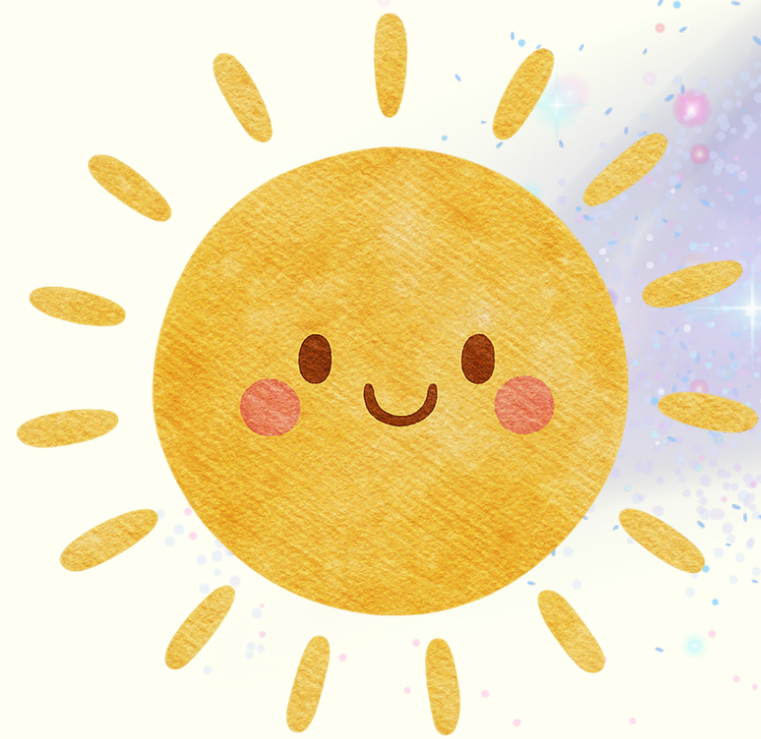




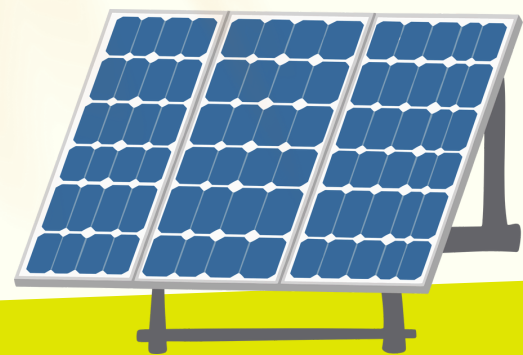
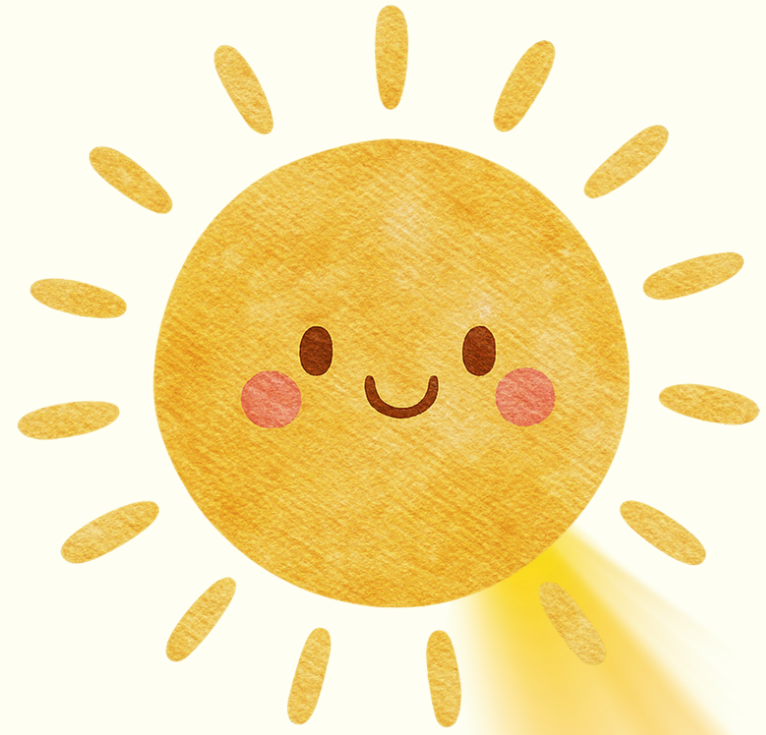




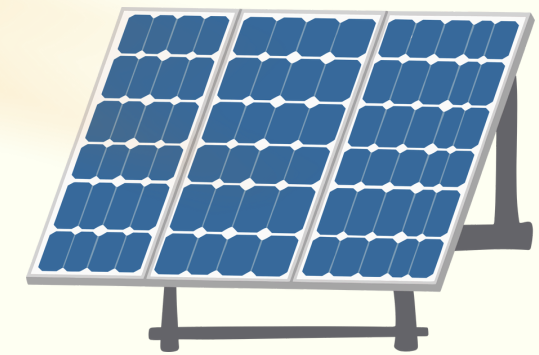
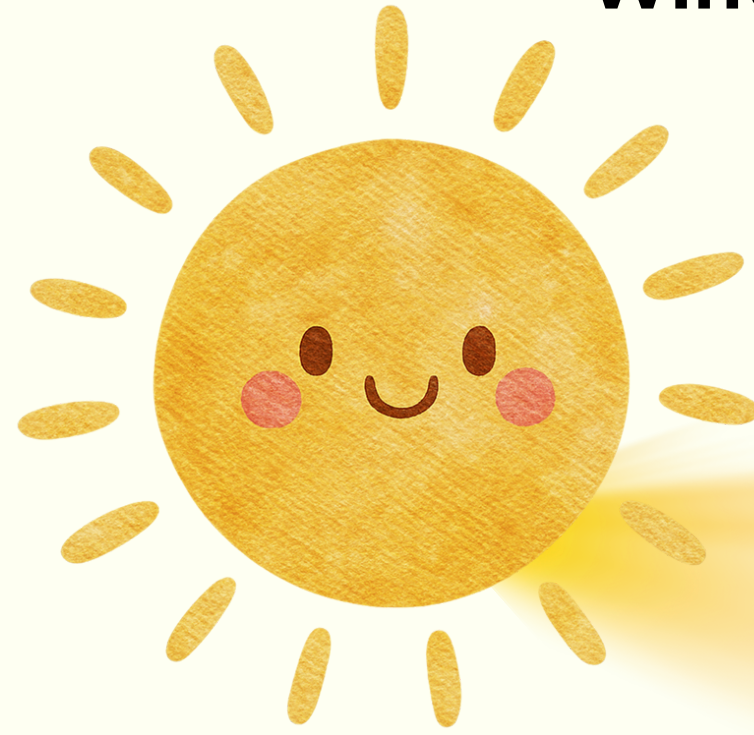




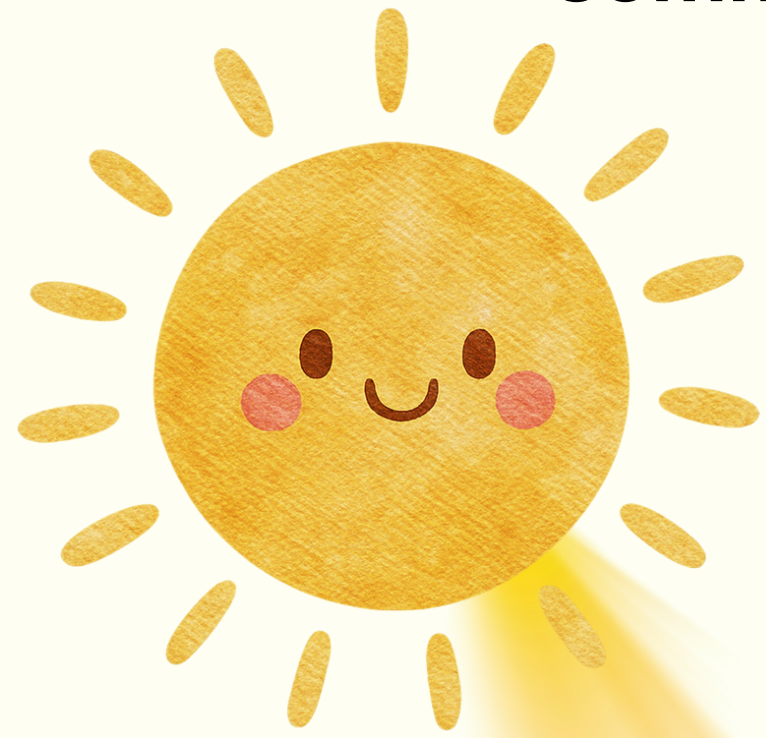
Sommer



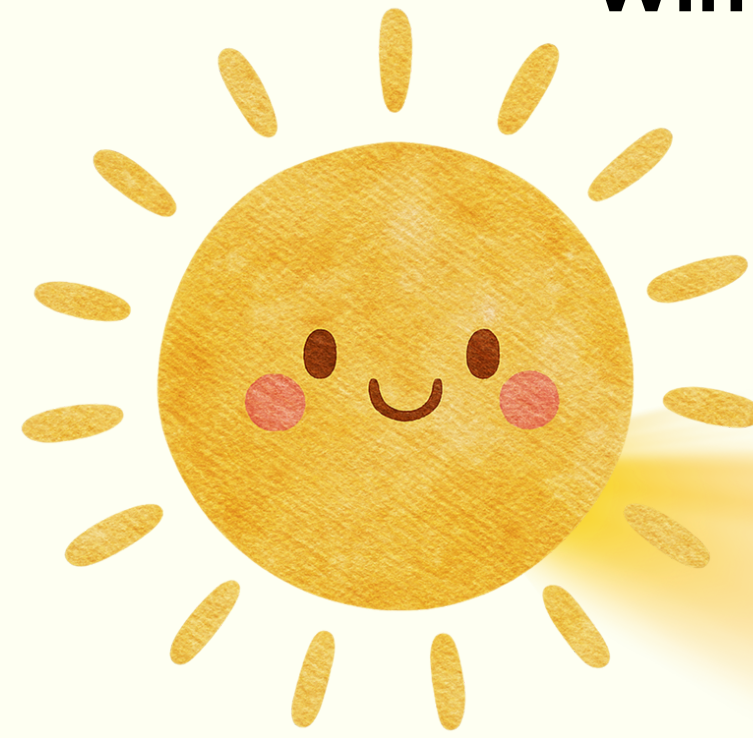
Winter



Sommer



Winter



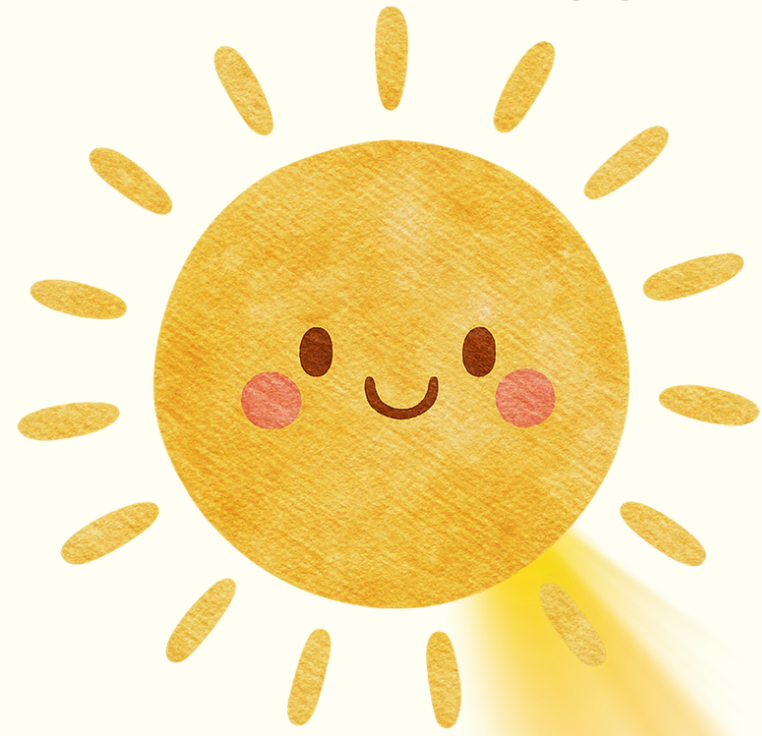
30 Dezember



30 Juni

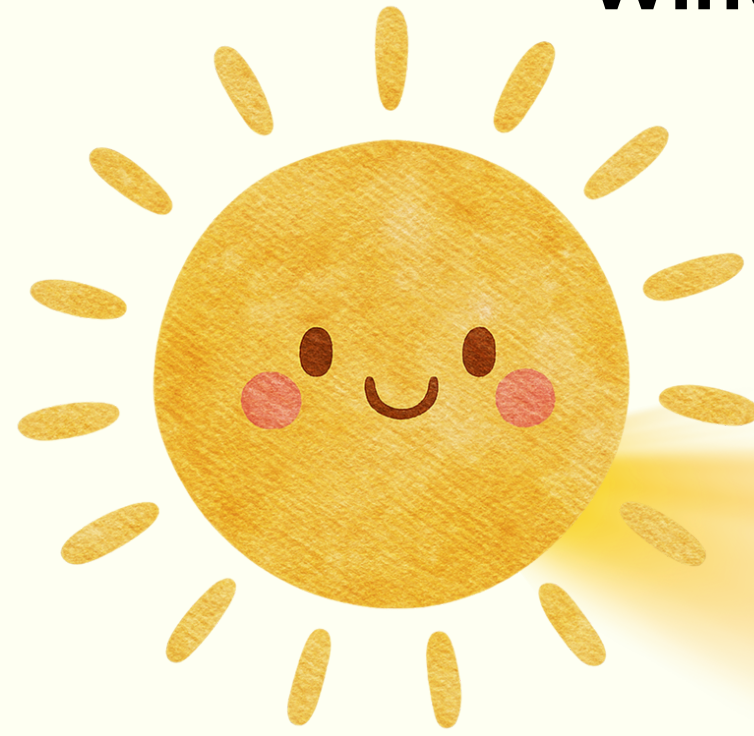


Sommer

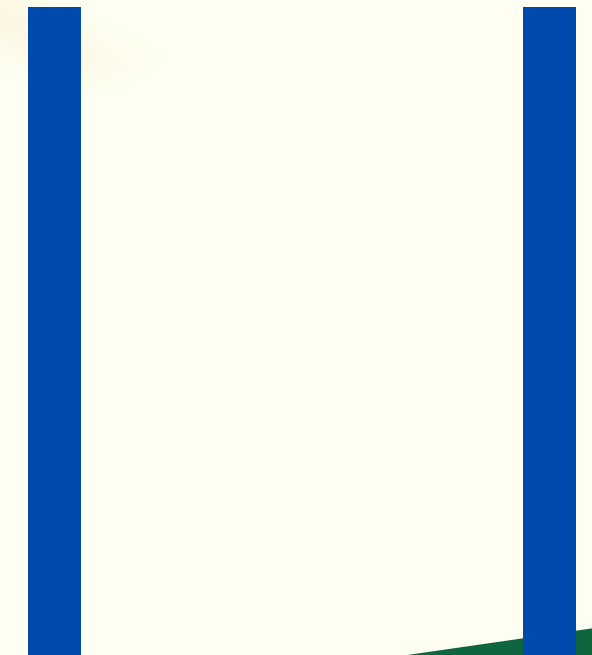


30 Juni

Winter

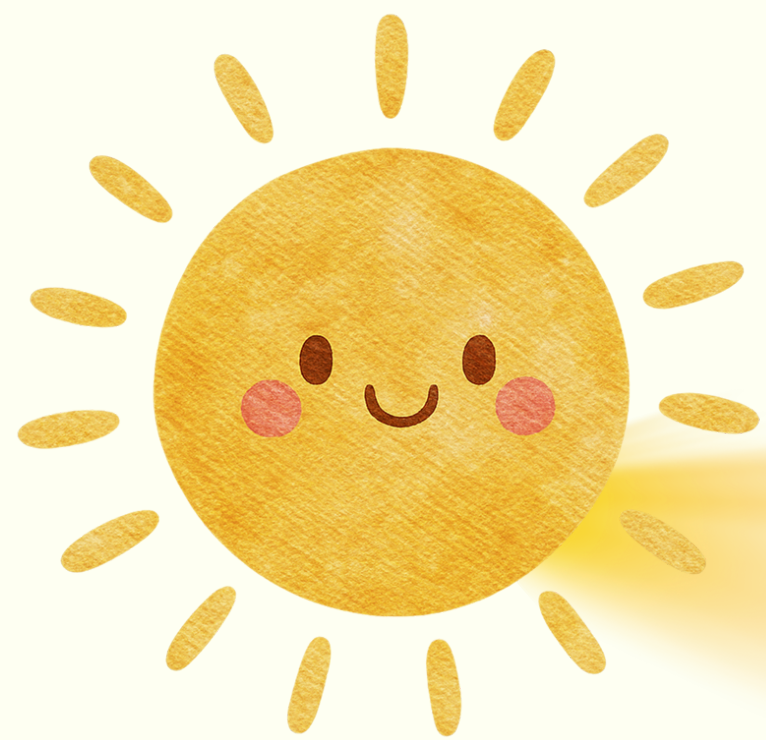


30 Dezember

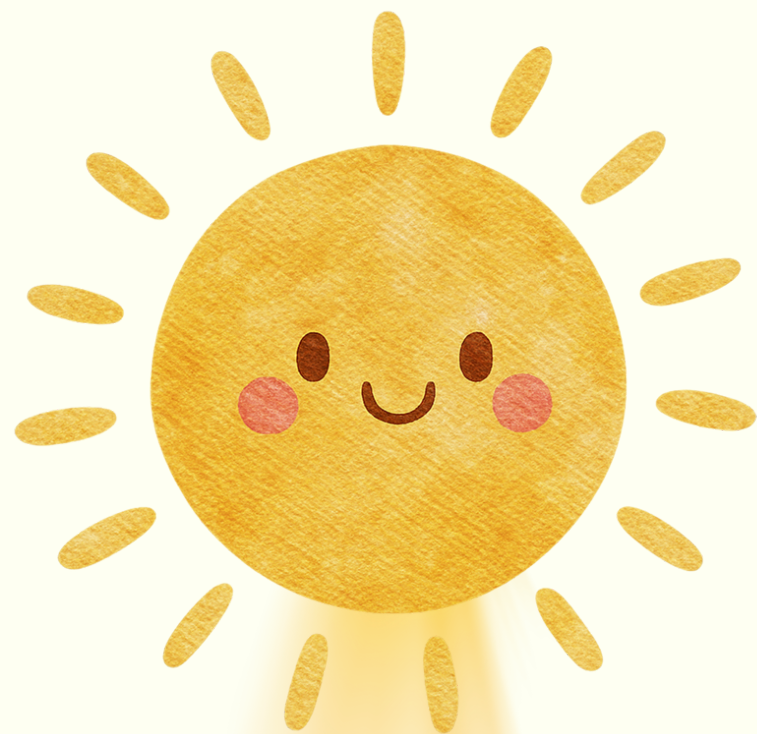




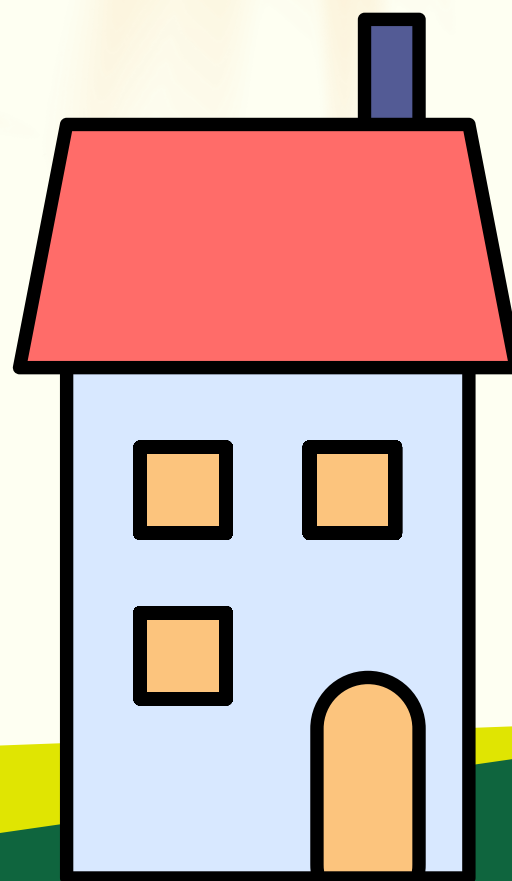
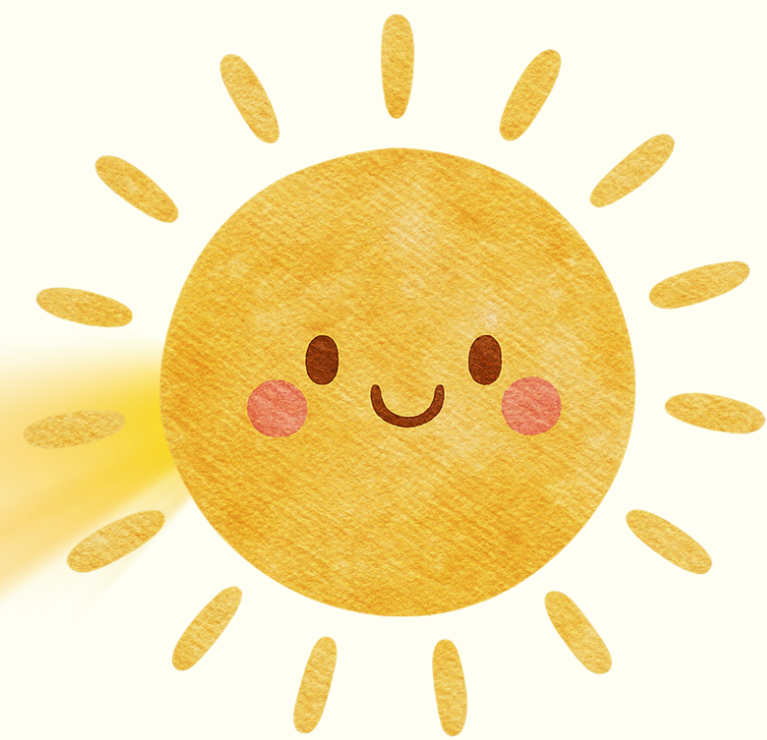
Früh



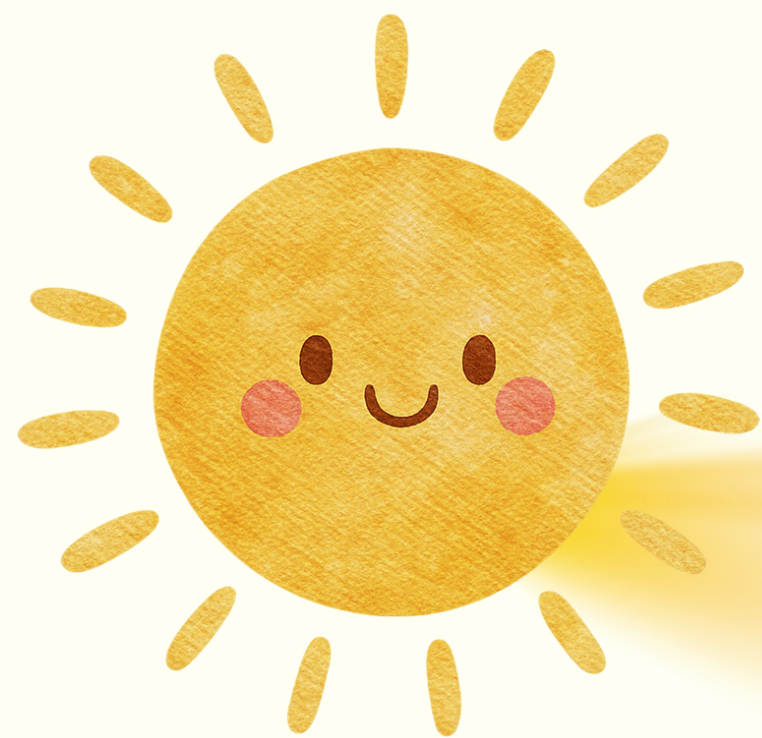
Mittag



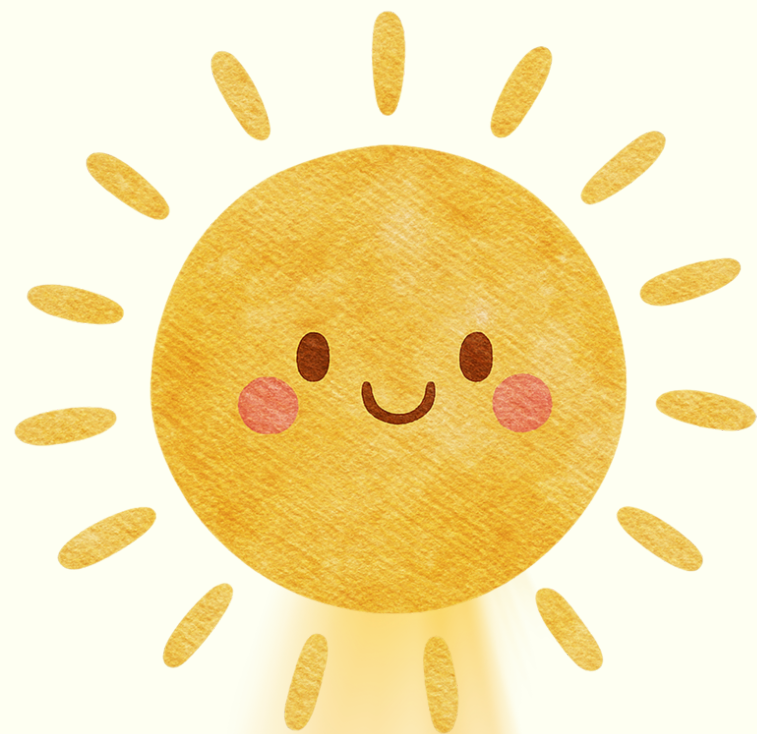
Abend



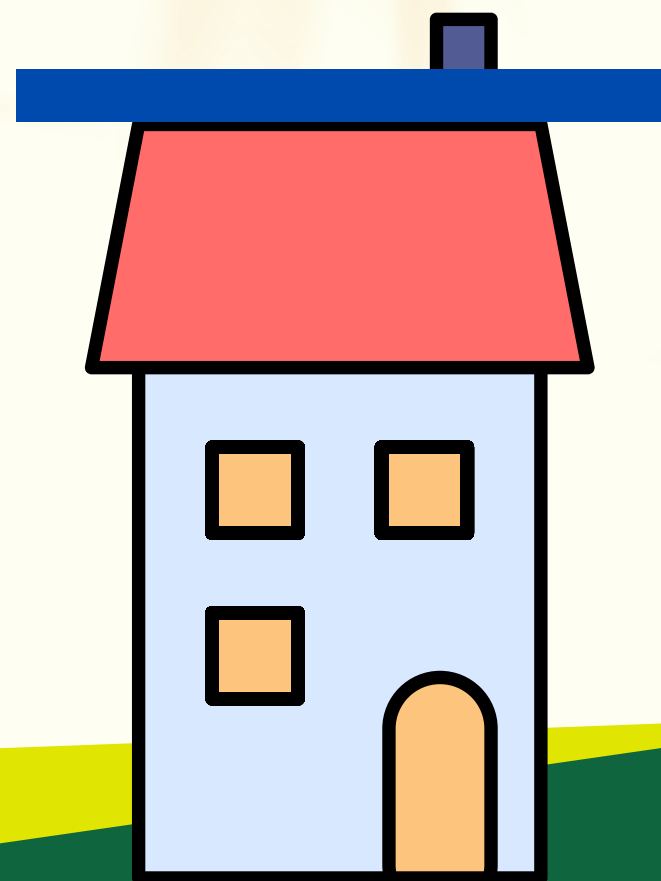
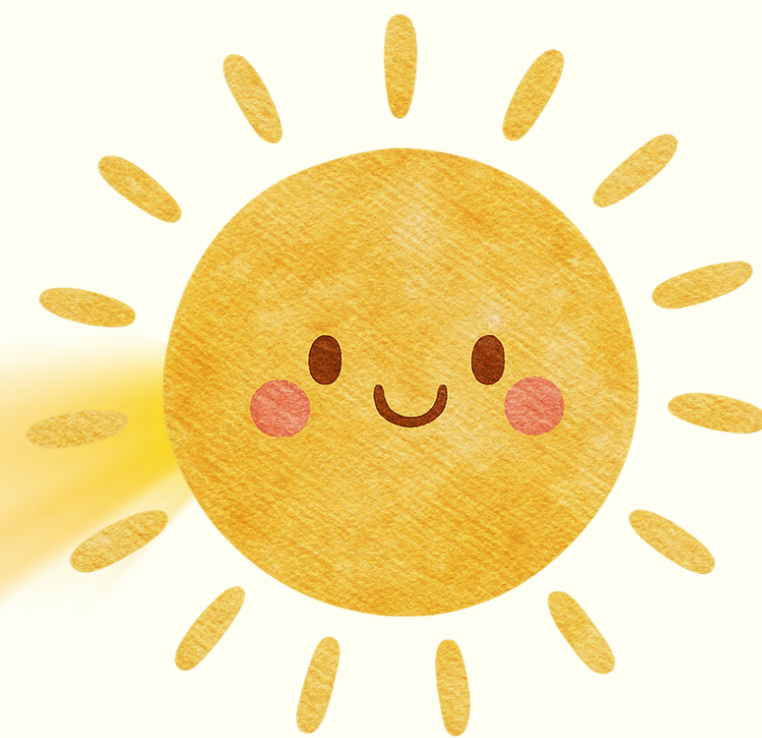
Früh



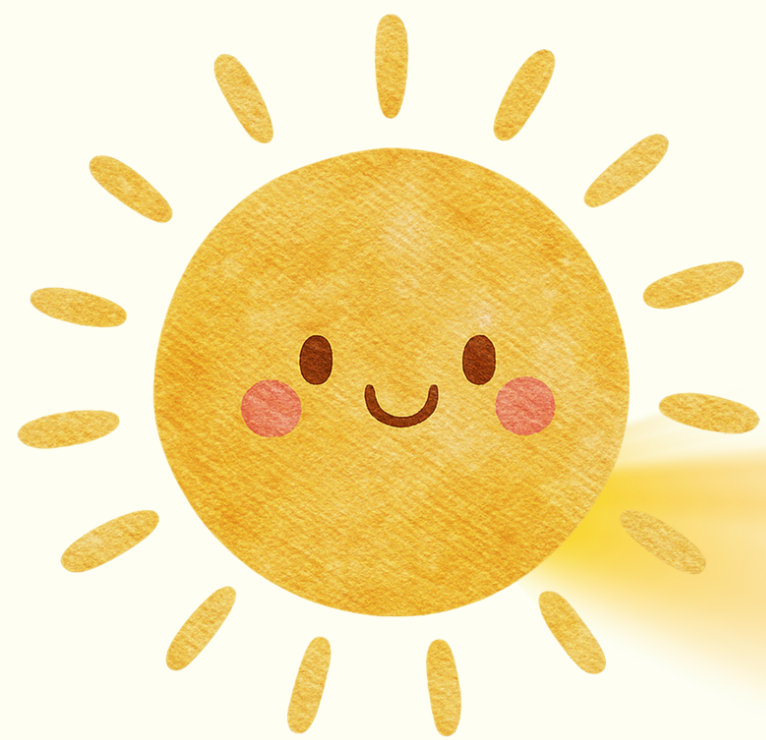
Mittag



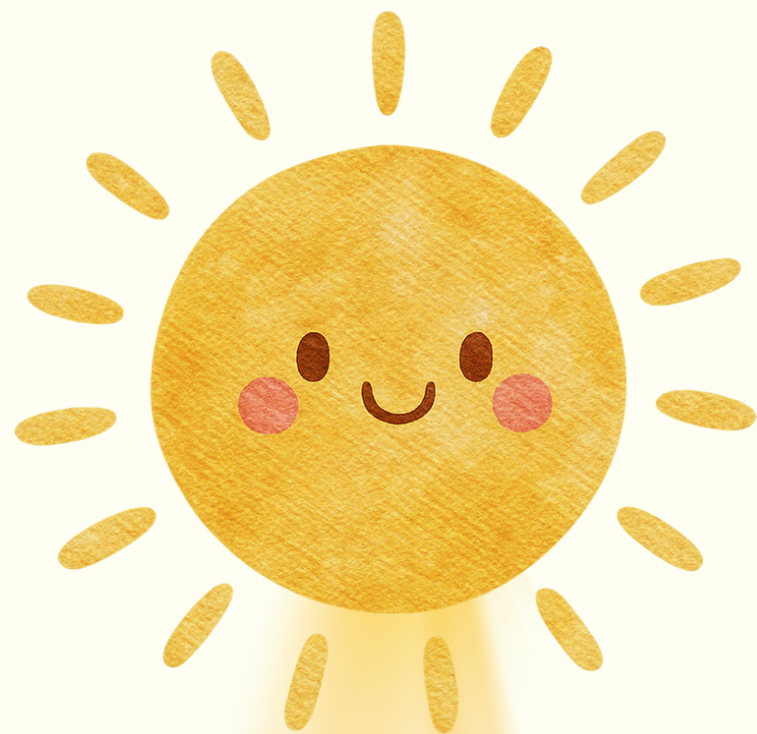
Abend



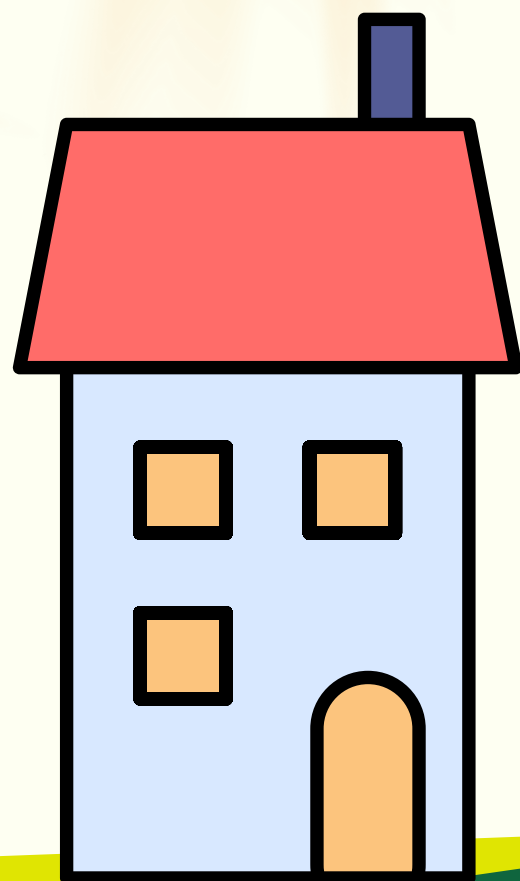
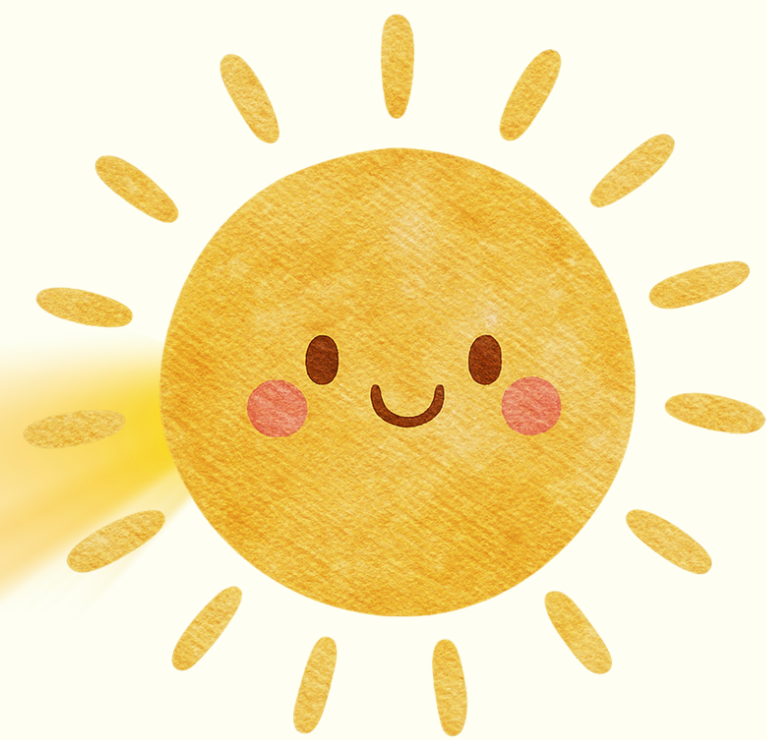
Früh



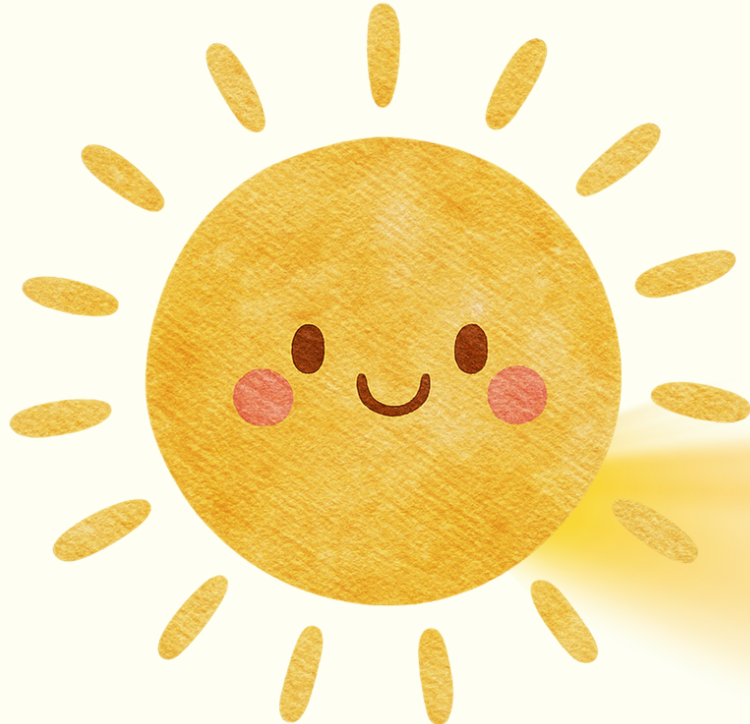
Mittag



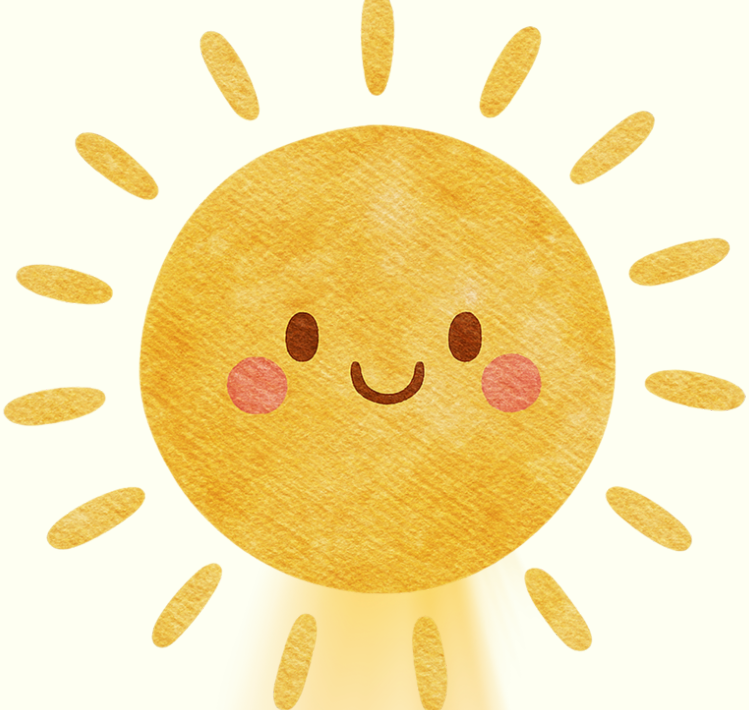
Abend



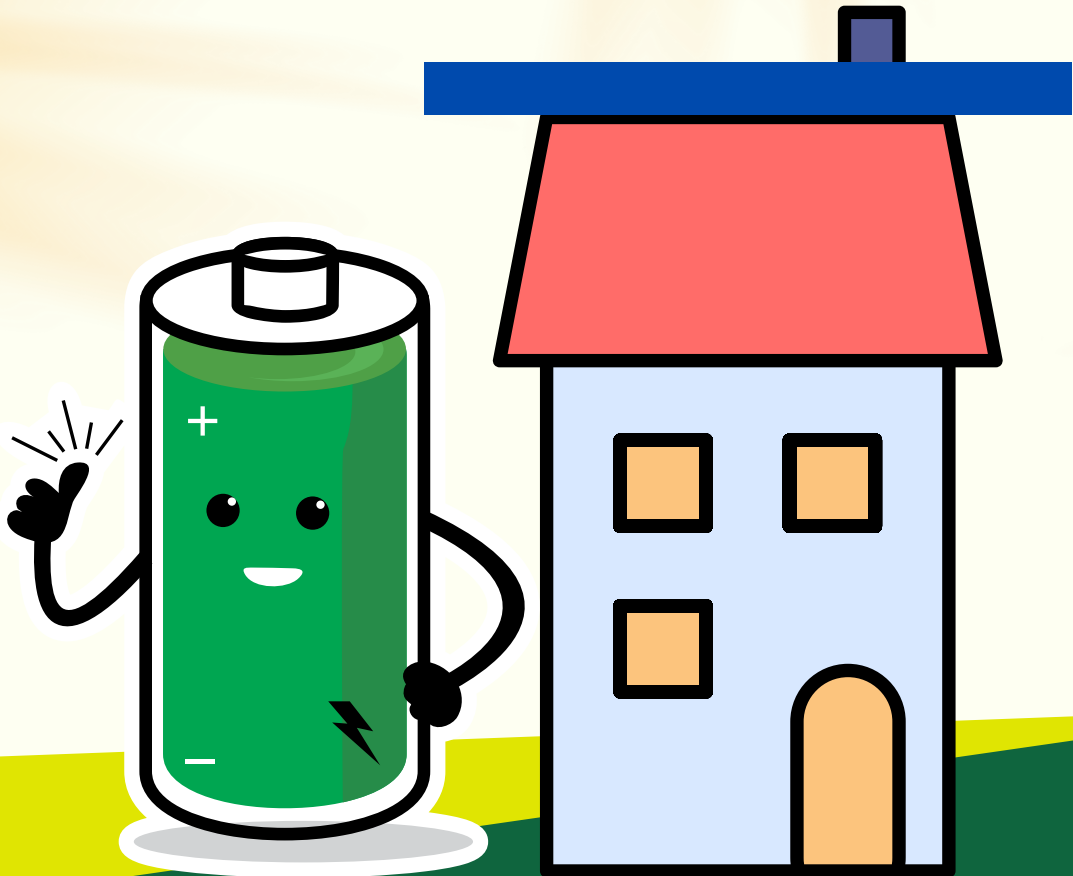
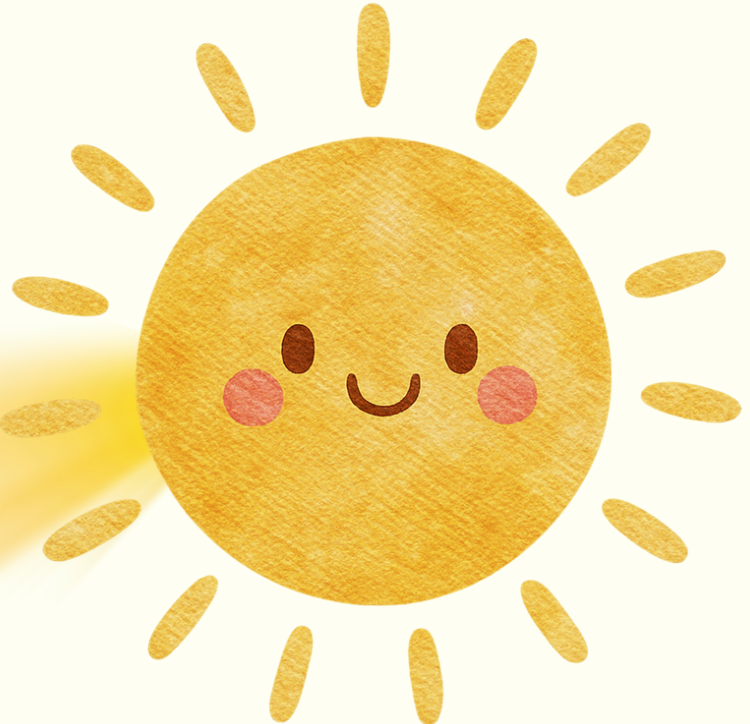
Früh



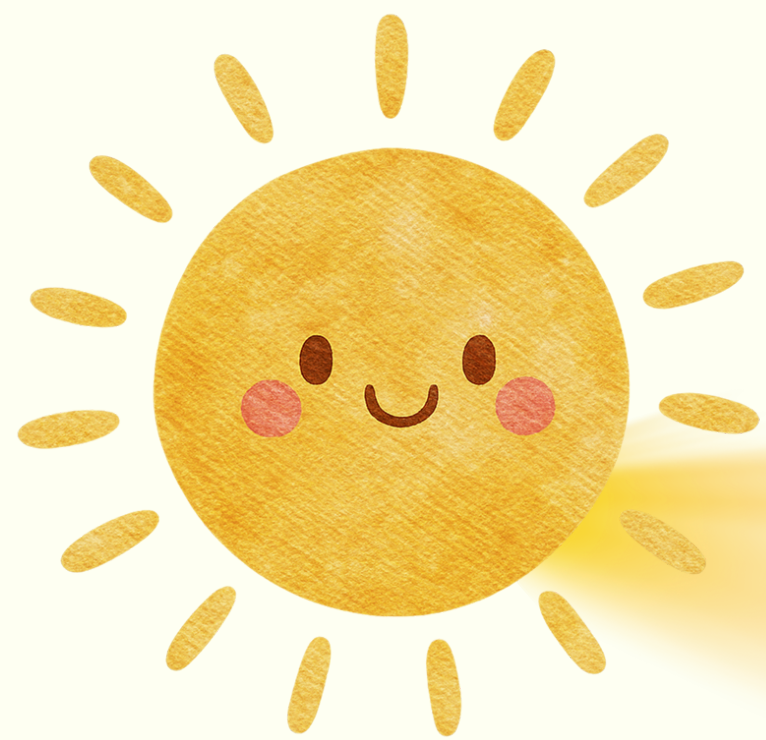
Mittag



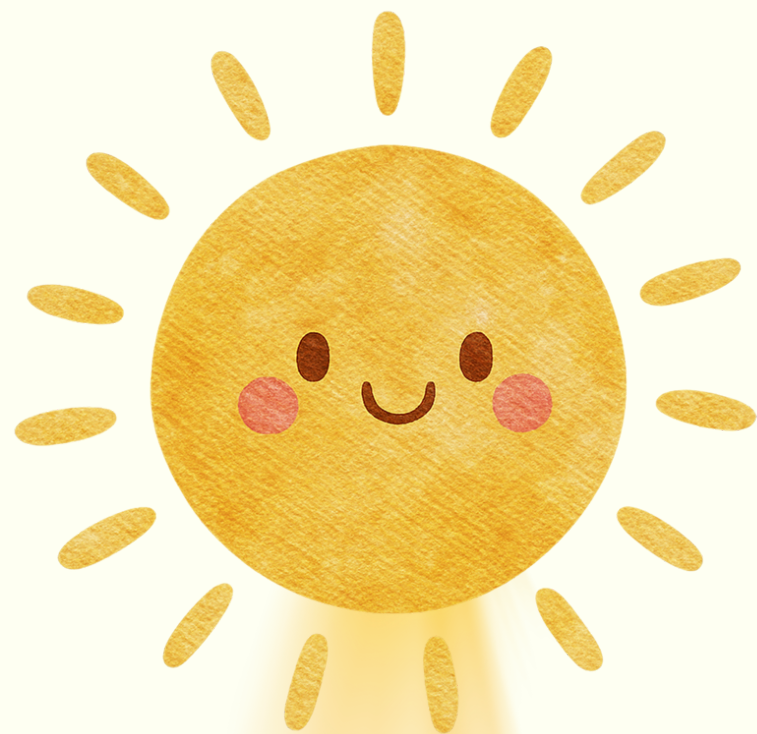
Abend



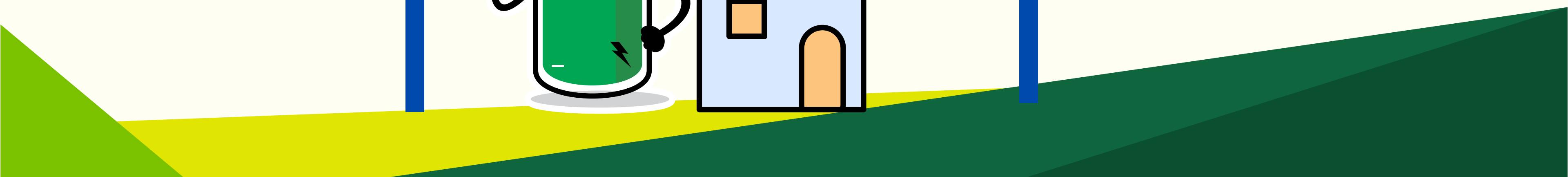
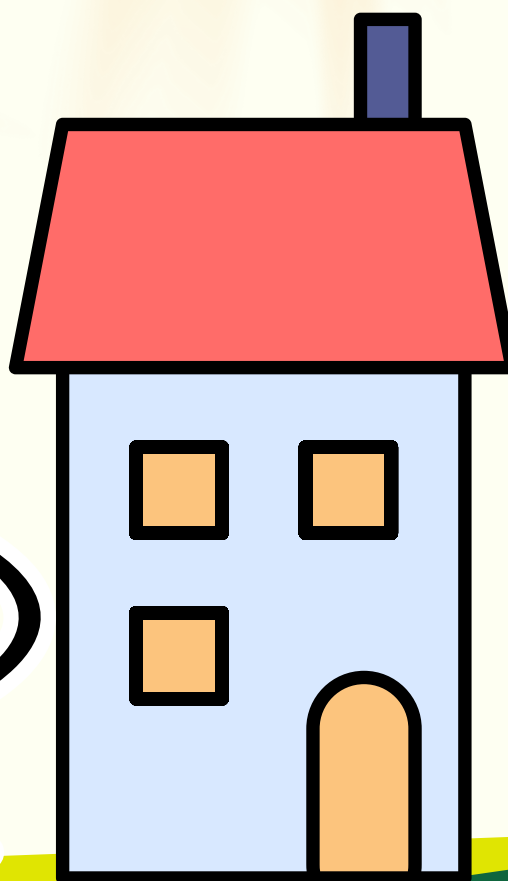
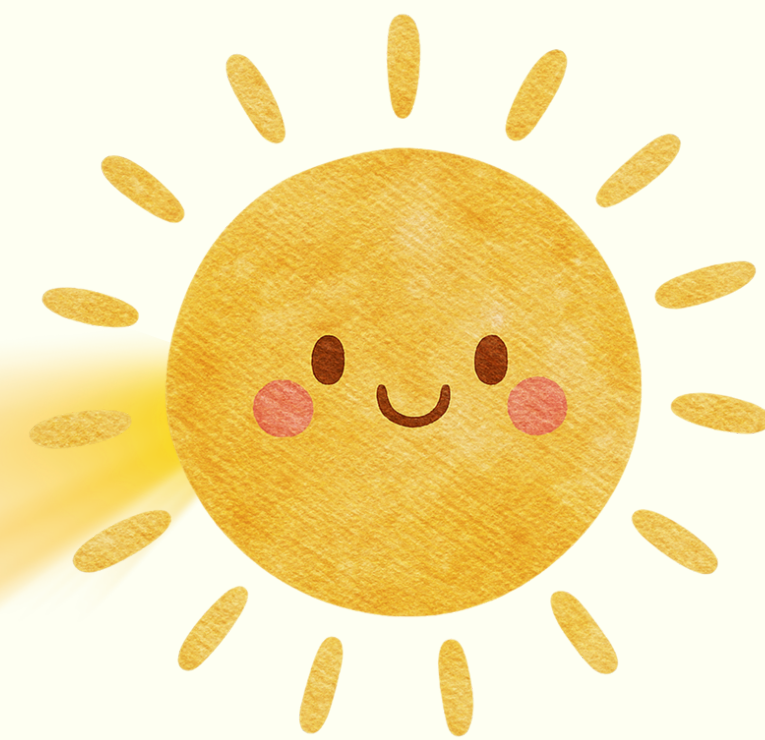
Früh

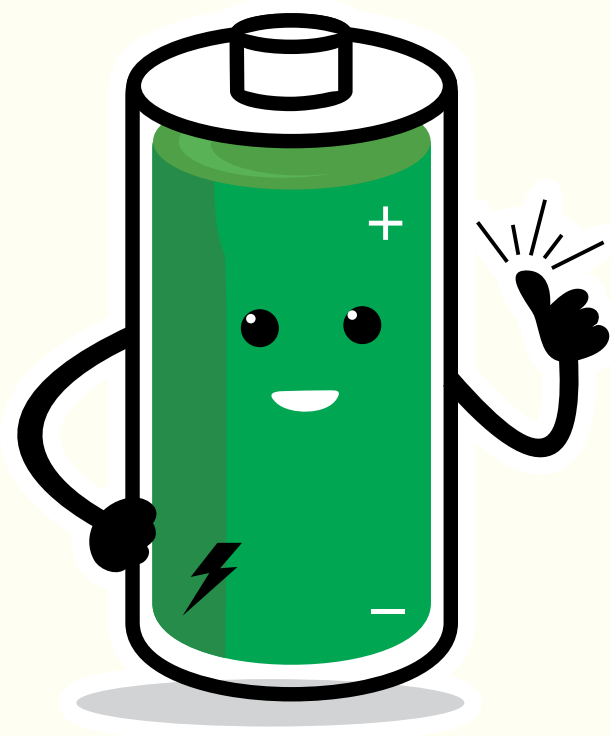


Mittag



Abend





2025

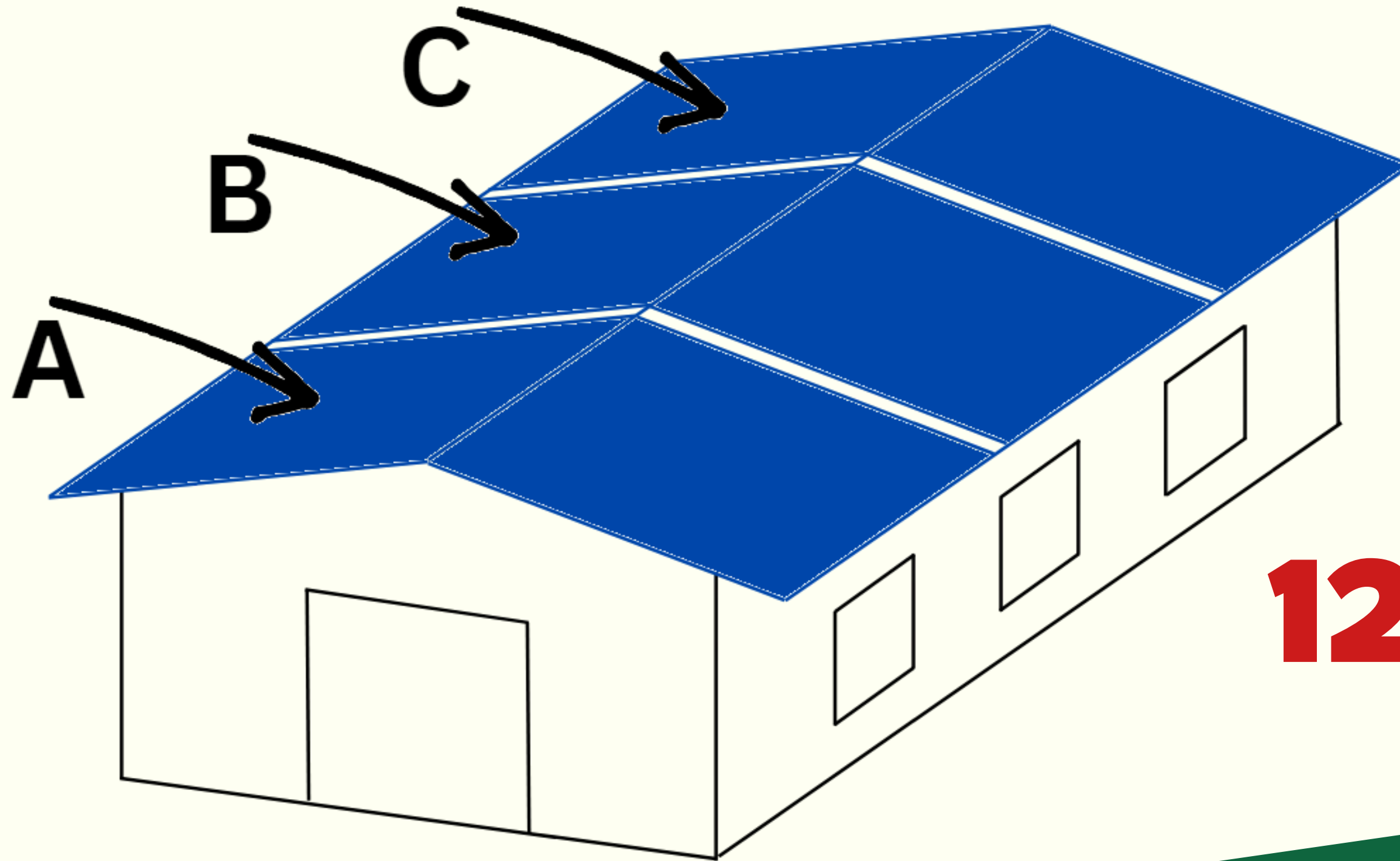
2026

2027

2028

2029

BETEILIGUNG 2024



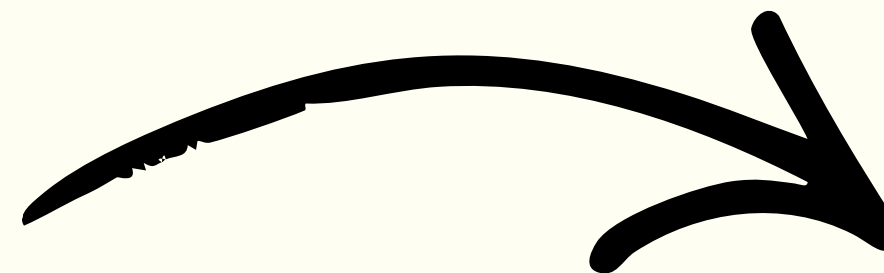
12,46%

EEG BÜRGERBETEILIGUNGEN FLEXKAPG

BÜRGERBETEILIGUNG D



Einmalige Einzahlung



Pro gehandelter Energie

10

BÜRGERBETEILIGUNG D



Pro gehandelter Energie

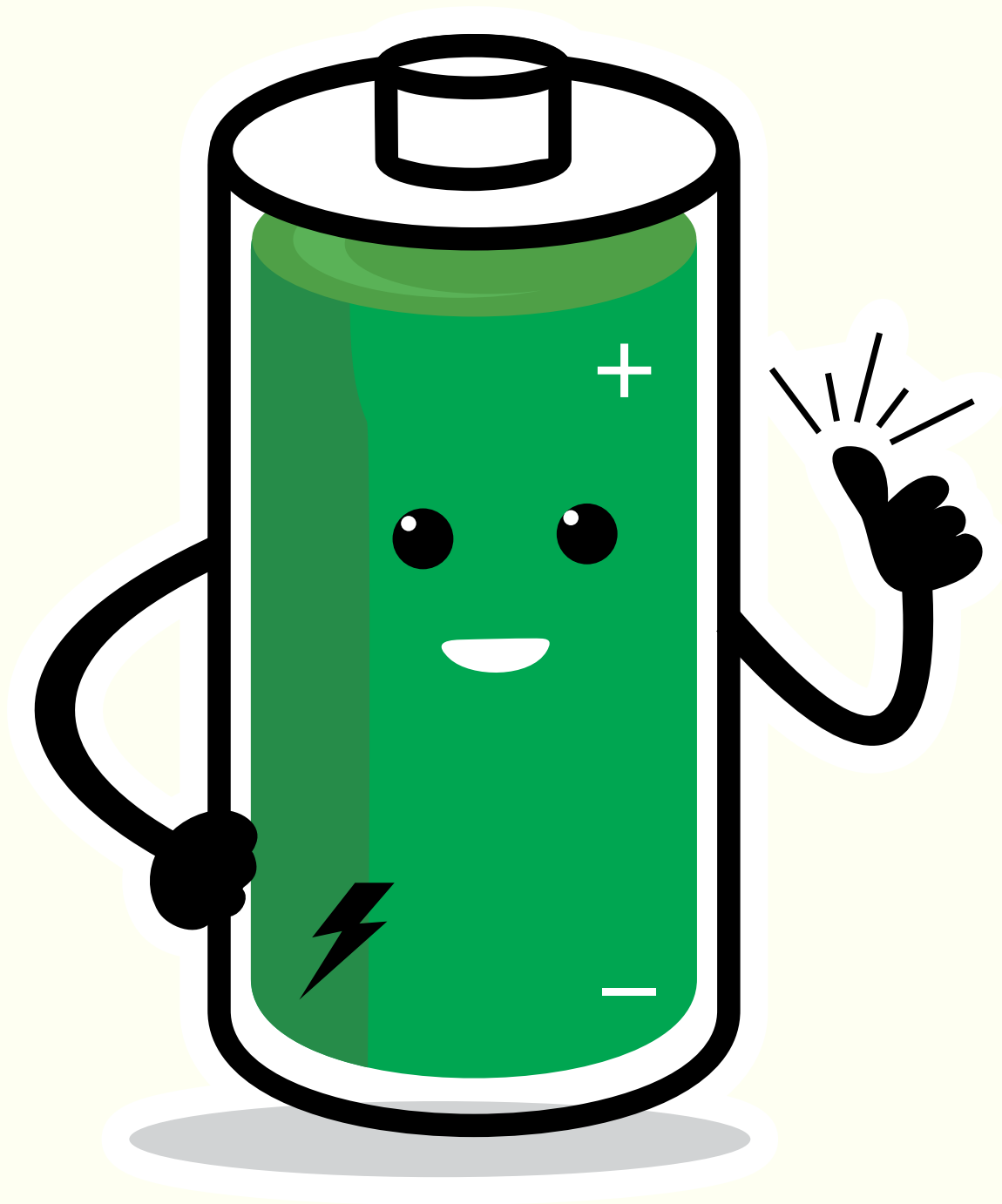
Produzentenpreis:

11 Cent/kWh

Abnehmerpreis:

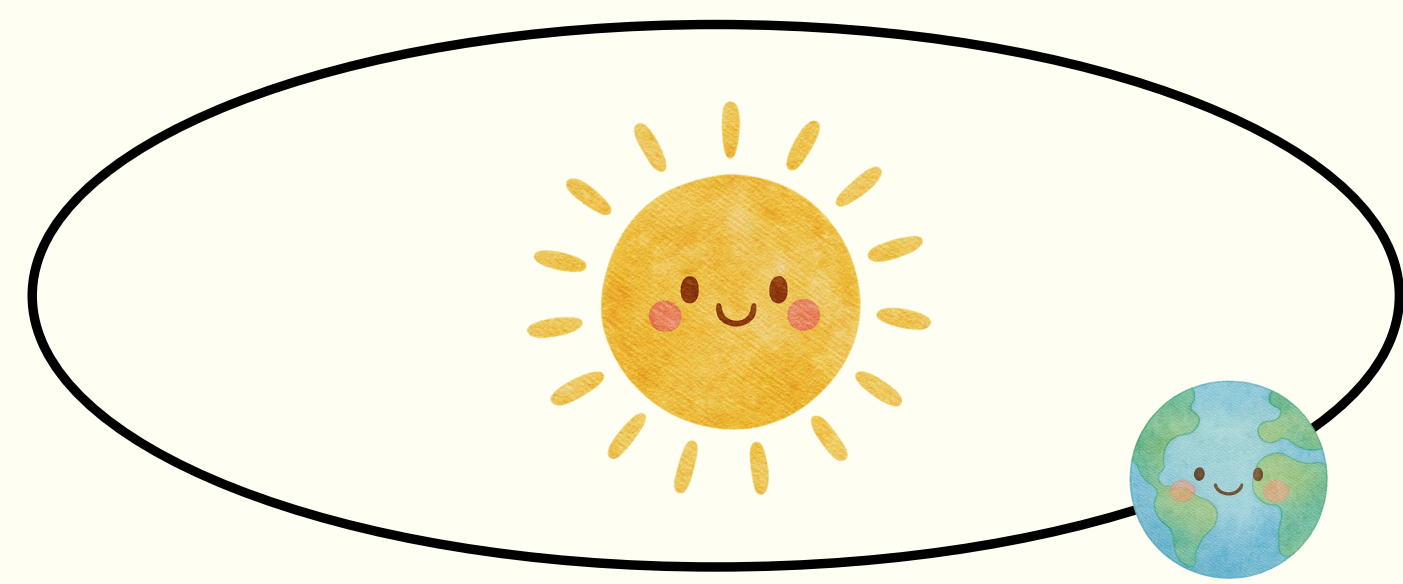
13 Cent/kWh

BÜRGERBETEILIGUNG D





ENERGIENEUTRALER BAUERNHOF





The diagram shows a storage system on a light green background. It consists of several rectangular blocks: a large grey block at the bottom, a red block on top of its left side, a smaller yellow block on top of its right side, and a small grey block above the yellow one. A black arrow points from the text 'Großspeicher' to the red block. Another black arrow points from the text 'Gänse' to the yellow block. The bottom of the image features a dark green and yellow gradient.

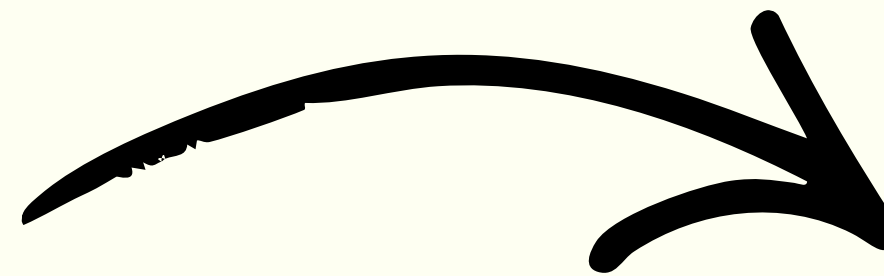
Großspeicher

Gänse



1	3	5	
2	4	6	

BÜRGERBETEILIGUNG E



Pro gehandelter Energie



BÜRGERBETEILIGUNG E

+ ½ GANSL PRO JAHR

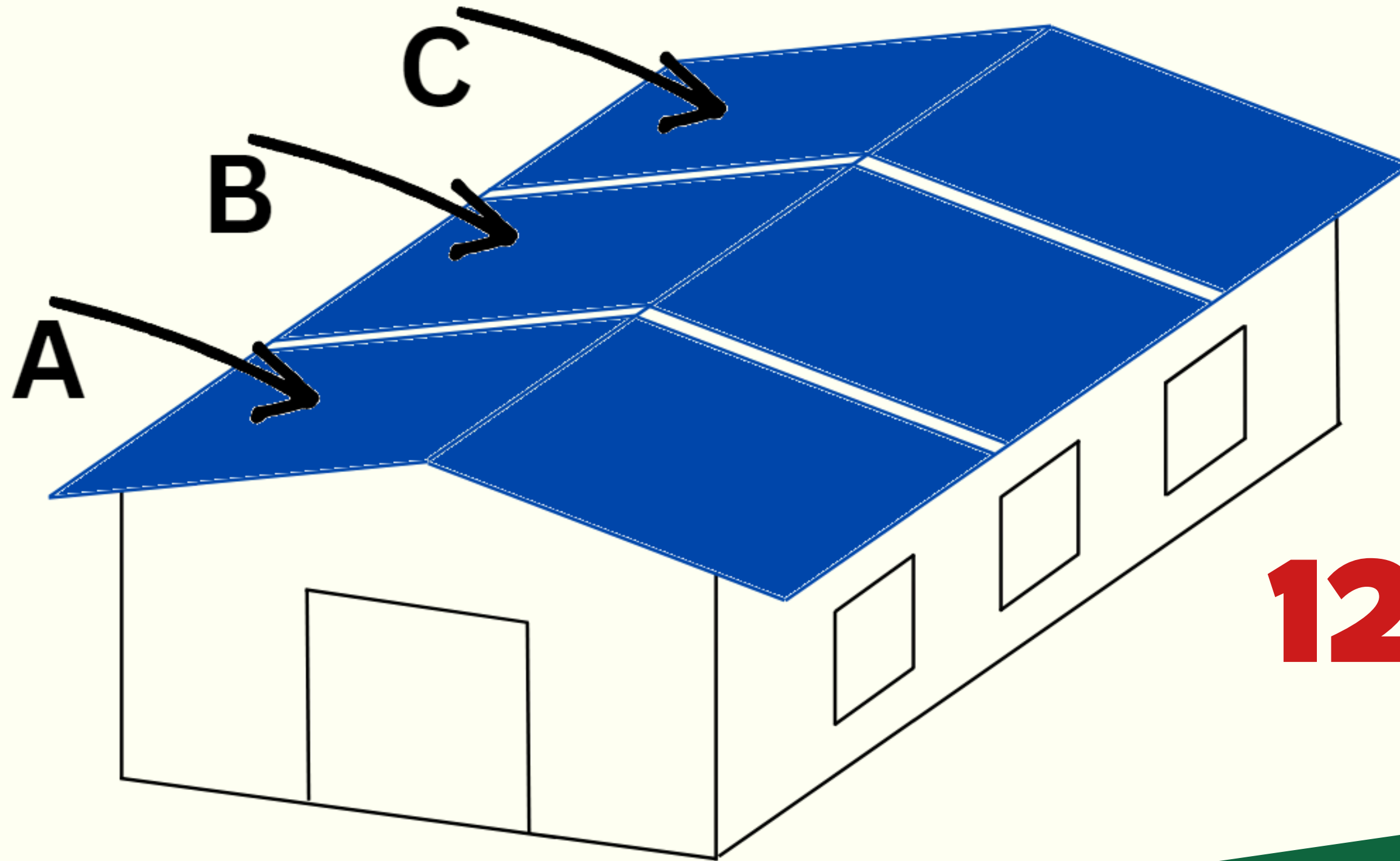
1750 KWH

NACH & NEBEL





BETEILIGUNG 2024



12,46%

EEG BÜRGERBETEILIGUNGEN FLEXKAPG

GELD ZURÜCK GARANTIE

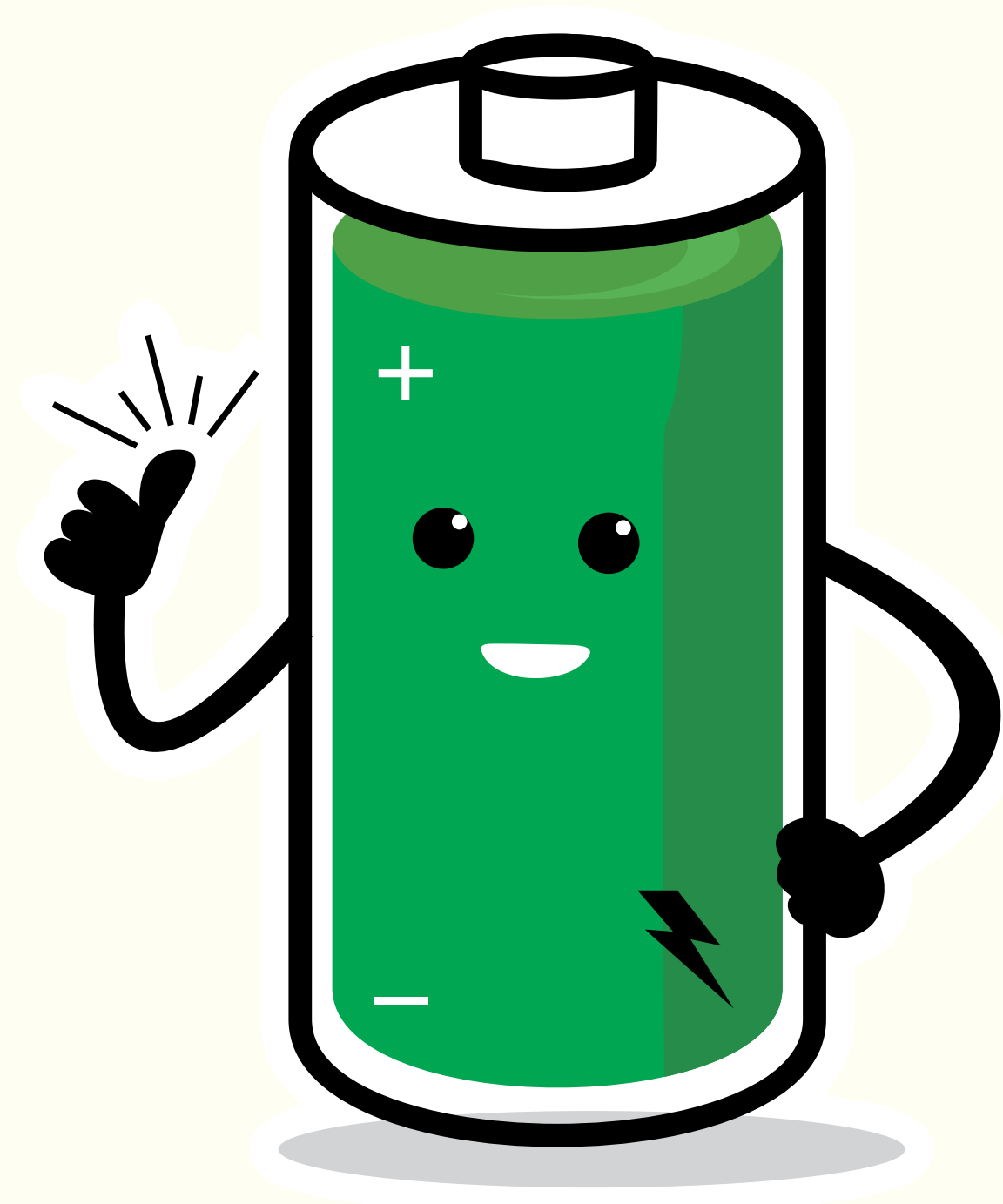
Wenn Projekt nicht innerhalb von 9 Monate umgesetzt, gibt es Geld zurück.

(3 Monate - Renovierung/Dämmung)


(6 Monate - Installation Speicher)




UMSETZUNG



ANSCHLUSS FÜR EEG-PRODUZENTEN AM GEMEINSCHAFTS-SPEICHER

- 1.) Besitzer PV-Anlage unter 30kWp**
 - 2.) Mindestens 1 Jahr Mitglied in EEG**
 - 3.) Verhältnis Verbrauch zu PV = 1/1,3**
- 

ANSCHLUSS FÜR SPEICHER AM GEMEINSCHAFTS-SPEICHER

- 1.) Besitzer PV-Anlage unter 100kWp**
 - 2.) Mindestens 1 Jahr Mitglied in EEG**
 - 3.) Verhältnis PV zu Speicher = 1/0,8**
 - 4.) Speicher Programmierbar**
- 

FRA GERUNDE

